

## P/N OE7522001/300



Manual hose reel s. 500, for air-water, 200 bar, without hose. Drum width 240 mm. Inlet G 3/8 (f) - outlet G 1/2 (f)

### SECTORS OF USE

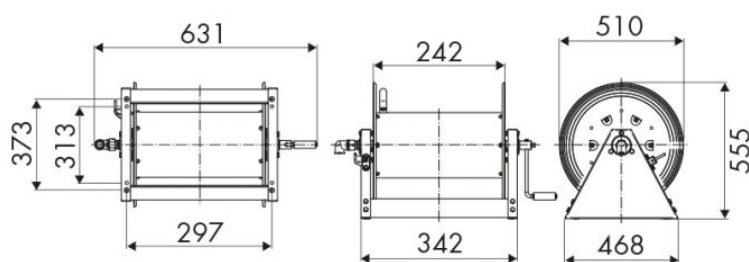
Agriculture, Industry, Mining, Lube trucks and transports

### FEATURES

|                   |  |
|-------------------|--|
| Pressure          | 200 bar                                      |
| Compatible fluids | water max 130 °C                             |
| Swivel joint      | AISI 304 stainless steel                     |
| Seals             | Viton®                                       |
| Characteristic    | fixed  |
| Material          | painted steel                                |
| Couplings         | -  |
| Hose              | -  |
| ∅ e hose length   | -  |
| Inlet             | G 3/8" (f)                                   |
| Outlet            | G 1/2" (f)                                   |
| Reel flow path    | AISI 304 stainless steel - zinc plated steel |



### OVERALL DIMENSIONS (mm)



### FURTHER FEATURES

| Capacity 1/4" | Capacity 3/8" | Capacity 1/2" | Capacity 3/4" | Capacity 1" |
|---------------|---------------|---------------|---------------|-------------|
| 130 m         | 85 m          | 65 m          | 30 m          | 20 m        |