

P/N OE7522001/450

Manual hose reel s. 500, for oil and similar, 150 bar, without hose. Drum width 240 mm. Inlet-outlet G 1/2" (f)

SECTORS OF USE

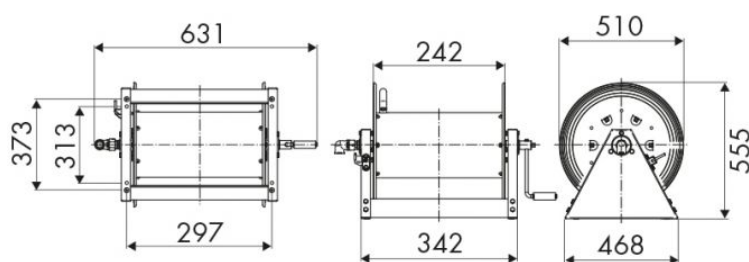
Agriculture, Industry, Mining, Lube trucks and transports

FEATURES

Pressure	150 bar
Compatible fluids	oils and similar products
Swivel joint	zinc plated steel
Seals	polyurethane
Characteristic	fixed
Material	painted steel
Couplings	-
Hose	-
Ø e hose length	-
Inlet	G 1/2" (f)
Outlet	G 1/2" (f)
Reel flow path	zinc plated steel



OVERALL DIMENSIONS (mm)



FURTHER FEATURES

Capacity 1/4"	Capacity 3/8"	Capacity 1/2"	Capacity 3/4"	Capacity 1"
130 m	85 m	65 m	30 m	20 m