

## P/N 0E7532001/150

Manual hose reel s. 500, for air-water, 20 bar, without hose. Drum width 320 mm. Inlet-outlet G 1/2" (f)

### SECTORS OF USE

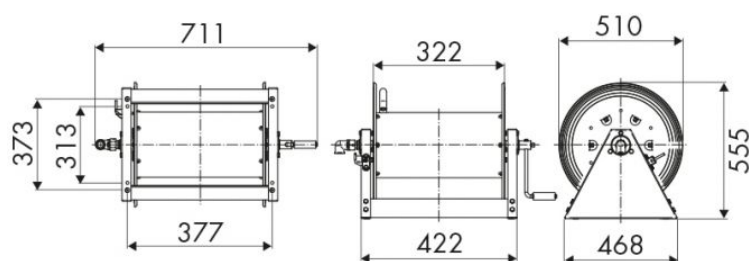
Agriculture, Industry, Mining, Lube trucks and transports

### FEATURES

Pressure	20 bar
Compatible fluids	air - water
Swivel joint	brass
Seals	Viton®
Characteristic	fixed
Material	painted steel
Couplings	-
Hose	-
Ø e hose length	-
Inlet	G 1/2" (f)
Outlet	G 1/2" (f)
Reel flow path	brass - zinc plated steel



### OVERALL DIMENSIONS (mm)



### FURTHER FEATURES

Capacity 1/4"	Capacity 3/8"	Capacity 1/2"	Capacity 3/4"	Capacity 1"
200 m	130 m	100 m	50 m	30 m