

P/N 0E7532001/200

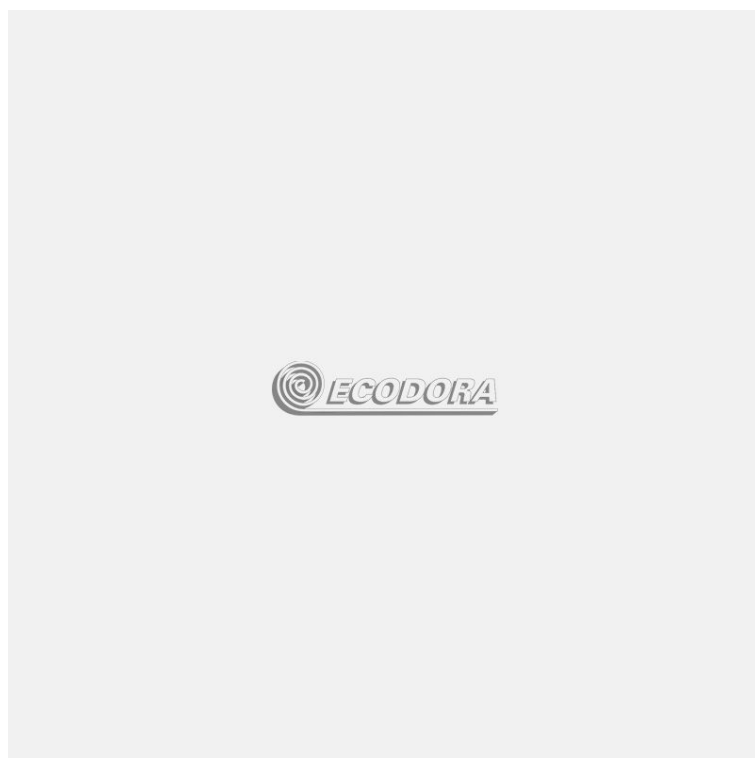
Manual hose reel s. 500, for hot water, 100 bar, without hose. Drum width 320 mm. Inlet-outlet G 1" (f)

SECTORS OF USE

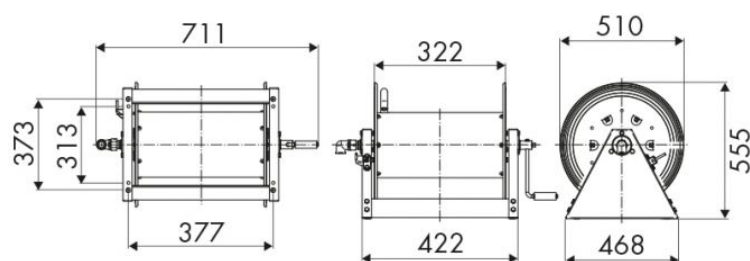
Agriculture, Industry, Mining, Lube trucks and transports

FEATURES

Pressure	100 bar
Compatible fluids	water max 130 °C
Swivel joint	AISI 304 stainless steel
Seals	Viton®
Characteristic	fixed
Material	painted steel
Couplings	-
Hose	-
Ø e hose length	-
Inlet	G 1" (f)
Outlet	G 1" (f)
Reel flow path	AISI 304 stainless steel - zinc plated steel



OVERALL DIMENSIONS (mm)



FURTHER FEATURES

Capacity 1/4"	Capacity 3/8"	Capacity 1/2"	Capacity 3/4"	Capacity 1"
200 m	130 m	100 m	50 m	30 m