

## P/N OE7552001/100

Manual hose reel s. 500, for oil and similar, 20 bar, without hose. Drum width 460 mm. Inlet-outlet G 1" (f)

### SECTORS OF USE

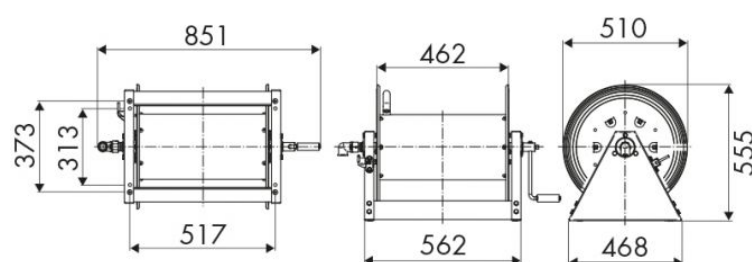
Agriculture, Industry, Mining, Lube trucks and transports

### FEATURES

Pressure	10 - 20 bar
Compatible fluids	air - water - diesel fuel
Swivel joint	brass
Seals	Viton®
Characteristic	fixed
Material	painted steel
Couplings	-
Hose	-
Ø e hose length	-
Inlet	G 1" (f)
Outlet	G 1" (f)
Reel flow path	brass - zinc plated steel



### OVERALL DIMENSIONS (mm)



### FURTHER FEATURES

Capacity 1/4"	Capacity 3/8"	Capacity 1/2"	Capacity 3/4"	Capacity 1"
300 m	200 m	150 m	80 m	50 m