

## P/N 0E7552001/450

Manual hose reel s. 500, for hot water, 150 bar, without hose. Drum width 460 mm. Inlet-outlet G 1/2" (f)

### SECTORS OF USE

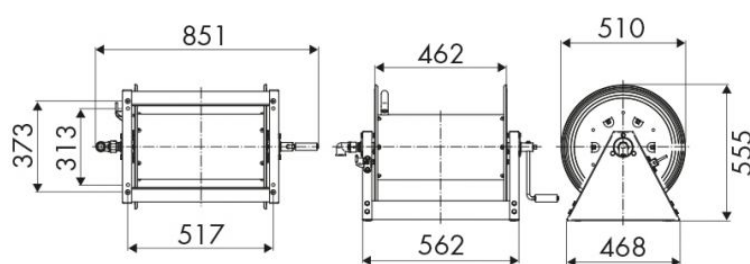
Agriculture, Industry, Mining, Lube trucks and transports

### FEATURES

Pressure	150 bar
Compatible fluids	oils and similar products
Swivel joint	zinc plated steel
Seals	polyurethane
Characteristic	fixed
Material	painted steel
Couplings	-
Hose	-
Ø e hose length	-
Inlet	G 1/2" (f)
Outlet	G 1/2" (f)
Reel flow path	zinc plated steel



### OVERALL DIMENSIONS (mm)



### FURTHER FEATURES

Capacity 1/4"	Capacity 3/8"	Capacity 1/2"	Capacity 3/4"	Capacity 1"
300 m	200 m	150 m	80 m	50 m