

## P/N OE842001/3000

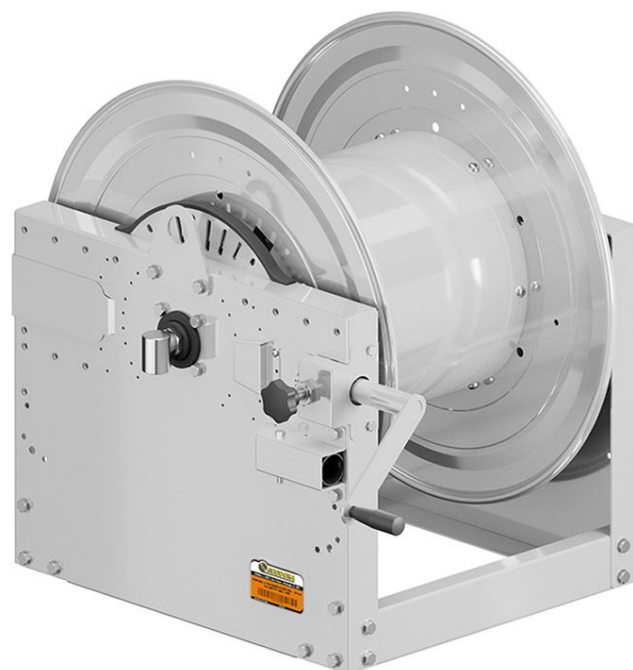
Manual hose reel in painted steel s. 700, for air-water, 150 bar, without hose. Drum width 410 mm. Inlet-outlet G 1" (f) with reel flow path in AISI 304 stainless steel

### SECTORS OF USE

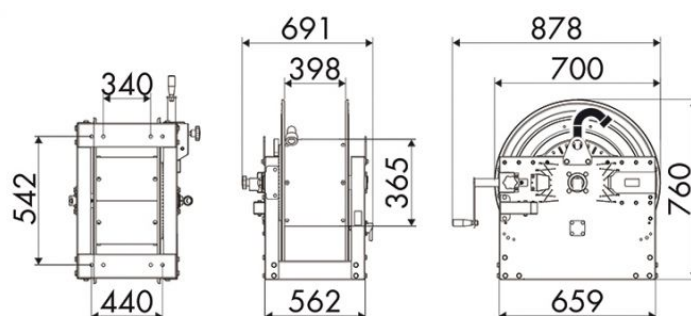
Industry, Mining, Lube trucks and transports

### FEATURES

Pressure	150 bar
Compatible fluids	air - water
Swivel joint	AISI 304 stainless steel
Seals	Viton®
Characteristic	manual
Material	painted steel
Couplings	-
Hose	-
ø e hose length	-
Inlet	G 1" (f)
Outlet	G 1" (f)
Reel flow path	AISI 304 stainless steel



### OVERALL DIMENSIONS (mm)



### FURTHER FEATURES

Capacity 3/8"	Capacity 1/2"	Capacity 3/4"	Capacity 1"	Capacity 1.1/4"	Capacity 1.1/2"	Capacity 2"
420 m	280 m	180 m	100 m	60 m	50 m	30 m