

P/N 0E873001/5000

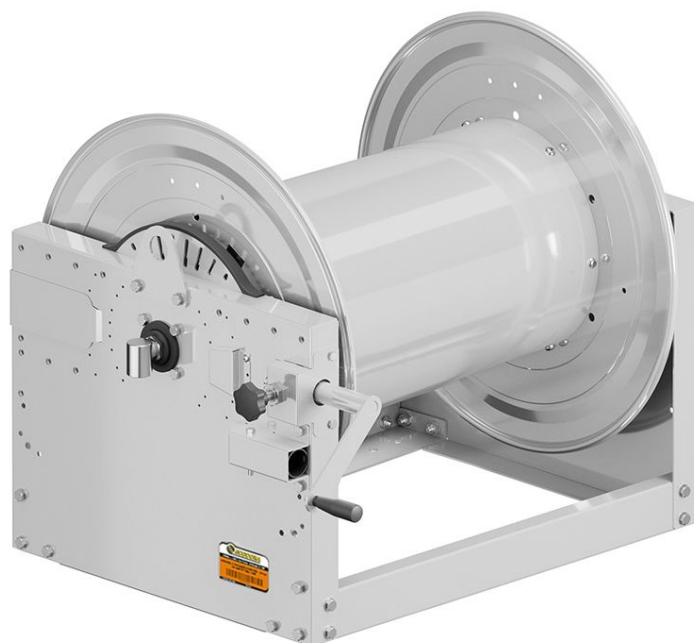
Manual hose reel in painted steel s. 700, for air-water, 100 bar, without hose. Drum width 690 mm. Inlet-outlet G 1" (f) with reel flow path in AISI 316 stainless steel

SECTORS OF USE

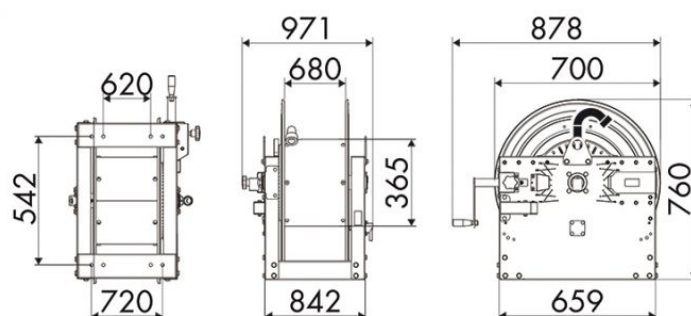
Industry, Mining, Lube trucks and transports

FEATURES

Pressure	100 bar
Compatible fluids	air - water
Swivel joint	AISI 316 stainless steel
Seals	Viton®
Characteristic	manual
Material	painted steel
Couplings	-
Hose	-
ø e hose length	-
Inlet	G 1" (f)
Outlet	G 1" (f)
Reel flow path	AISI 316 stainless steel



OVERALL DIMENSIONS (mm)



FURTHER FEATURES

Capacity 3/8"	Capacity 1/2"	Capacity 3/4"	Capacity 1"	Capacity 1.1/4"	Capacity 1.1/2"	Capacity 2"
550 m	350 m	244 m	134 m	84 m	75 m	43 m