

## P/N 756001/20



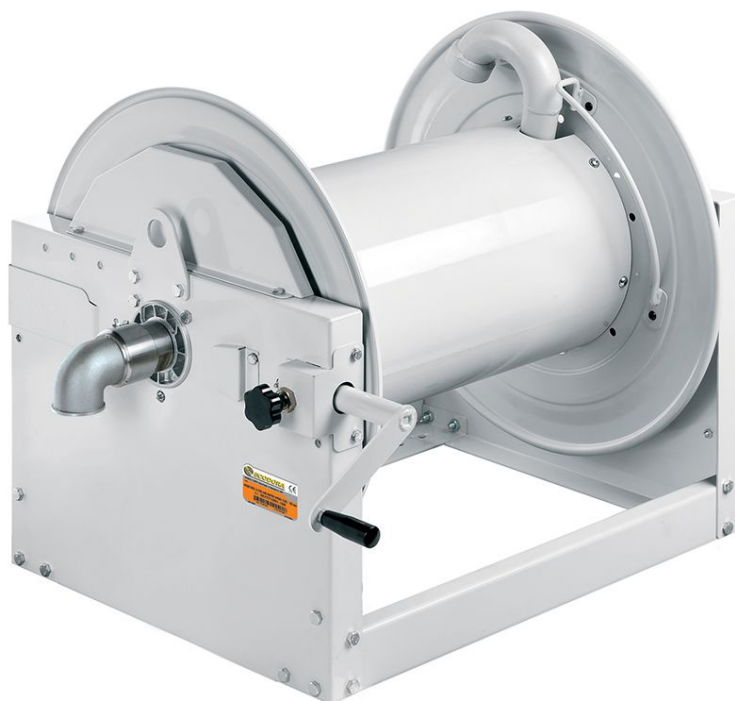
Manual hose reel s.700, for air-water, 70 bar, without hose. Drum width 550 mm. Inlet-outlet G 2" (f) with reel flow path junction in AISI 316 stainless steel

### SECTORS OF USE

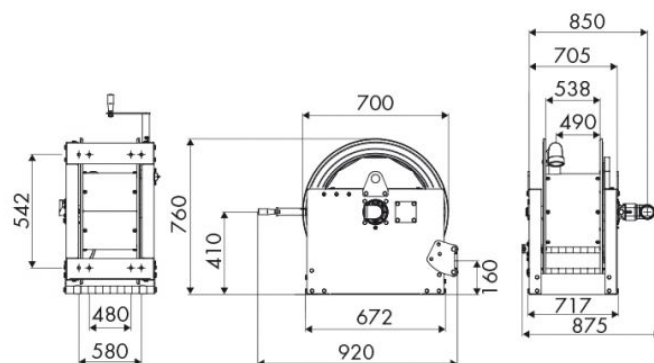
Industry, Mining, Lube trucks and transports

### FEATURES

|                   |                          |
|-------------------|--------------------------|
| Pressure          | 70 bar                   |
| Compatible fluids | air - water              |
| Swivel joint      | AISI 316 stainless steel |
| Seals             | Viton®                   |
| Characteristic    | manual                   |
| Material          | painted steel            |
| Couplings         | -                        |
| Hose              | -                        |
| ø e hose length   | -                        |
| Inlet             | G 2" (f)                 |
| Outlet            | G 2" (f)                 |
| Reel flow path    | AISI 316 stainless steel |



### OVERALL DIMENSIONS (mm)



### FURTHER FEATURES

| Capacity 1/4" | Capacity 5/16" | Capacity 3/8" | Capacity 1/2" | Capacity 5/8" |
|---------------|----------------|---------------|---------------|---------------|
| 320 m         | 240 m          | 140 m         | 100 m         | 90 m          |