

## P/N 771001/40



Manual hose reel s. 700, for oil and similar, 70 bar, without hose. Drum width 690 mm. Inlet-outlet G 2" (f)

### SECTORS OF USE

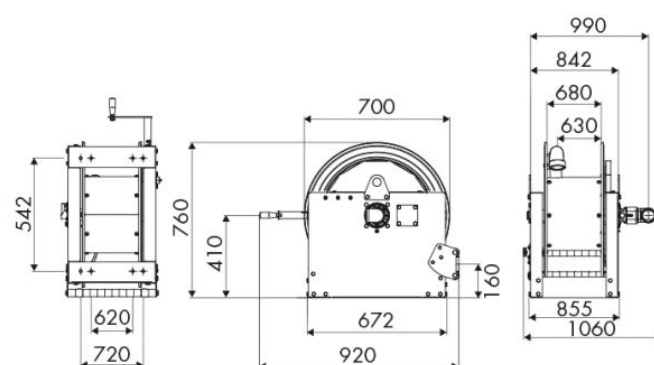
Industry, Mining, Lube trucks and transports

### FEATURES

|                   |                           |
|-------------------|---------------------------|
| Pressure          | 70 bar                    |
| Compatible fluids | oils and similar products |
| Swivel joint      | zinc plated steel         |
| Seals             | Viton®                    |
| Characteristic    | manual                    |
| Material          | painted steel             |
| Couplings         | -                         |
| Hose              | -                         |
| ø e hose length   | -                         |
| Inlet             | G 2" (f)                  |
| Outlet            | G 2" (f)                  |
| Reel flow path    | zinc plated steel         |



### OVERALL DIMENSIONS (mm)



### FURTHER FEATURES

| Capacity 3/8" | Capacity 1/2" | Capacity 3/4" | Capacity 1" | Capacity 1.1/4" | Capacity 1.1/2" | Capacity 2" |
|---------------|---------------|---------------|-------------|-----------------|-----------------|-------------|
| 550 m         | 350 m         | 244 m         | 134 m       | 84 m            | 75 m            | 43 m        |