

## P/N 0E854402/4000

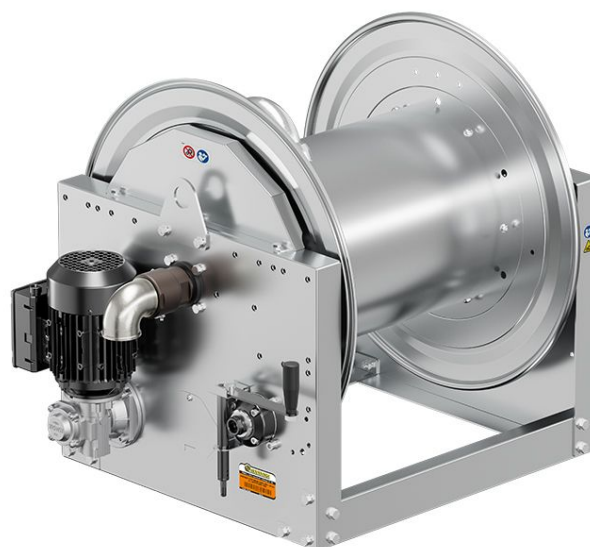
Hose reel with electric motorization 230 V AC - 50/60 Hz in AISI 304 stainless steel, ATEX s. 700, for water, oil, diesel and industrial fluids, 70 bar, without hose. Drum width 550 mm. Inlet-outlet G 2" (f)

### SECTORS OF USE

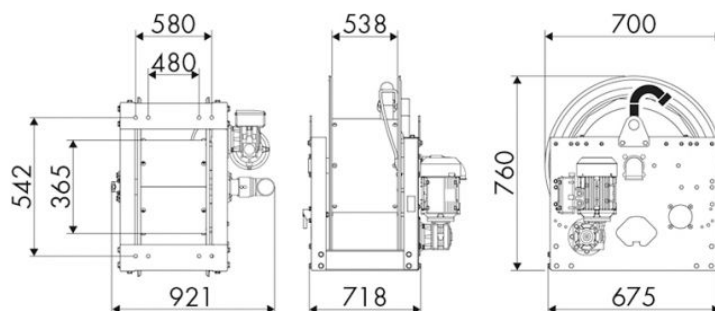
Industry, Mining, Lube trucks and transports

### FEATURES

Pressure	70 bar
Compatible fluids	water - oils - diesel fuel - industrial fluid
Swivel joint	AISI 304 stainless steel
Seals	Viton®
Characteristic	electric 230 V AC - 50/60 Hz ATEX
Material	AISI 304 stainless steel
Couplings	-
Hose	-
ø e hose length	-
Inlet	G 2" (f)
Outlet	G 2" (f)
Reel flow path	AISI 304 stainless steel



### OVERALL DIMENSIONS (mm)



### FURTHER FEATURES

Capacity 3/8"	Capacity 1/2"	Capacity 3/4"	Capacity 1"	Capacity 1.1/4"	Capacity 1.1/2"	Capacity 2"
420 m	280 m	180 m	100 m	60 m	50 m	30 m