

P/N 775801/20

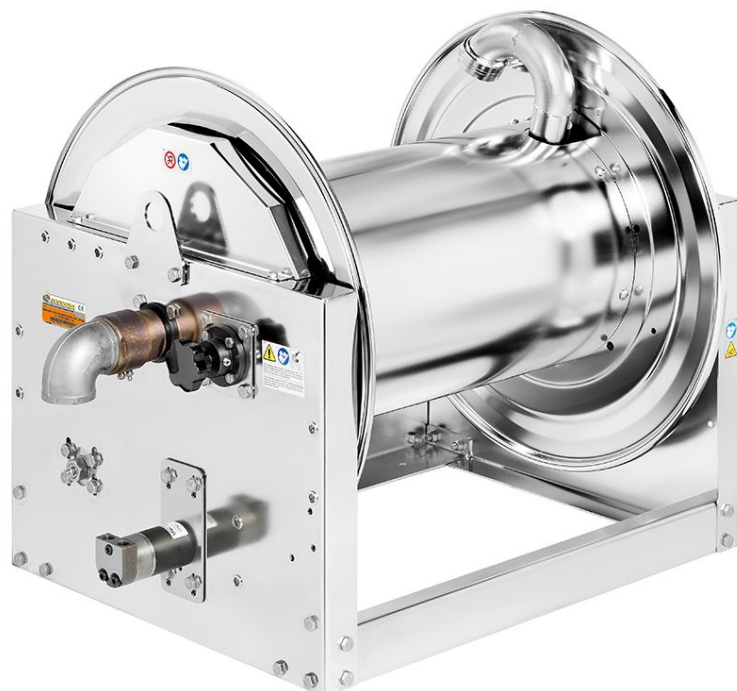
Hose reel with hydraulic motorisation in AISI 316 stainless steel s. 700, for water, oil, diesel and industrial fluids, 70 bar, without hose. Drum width 690 mm. Inlet-outlet G 2" (f) with junction in AISI 304 stainless steel for high flow

SECTORS OF USE

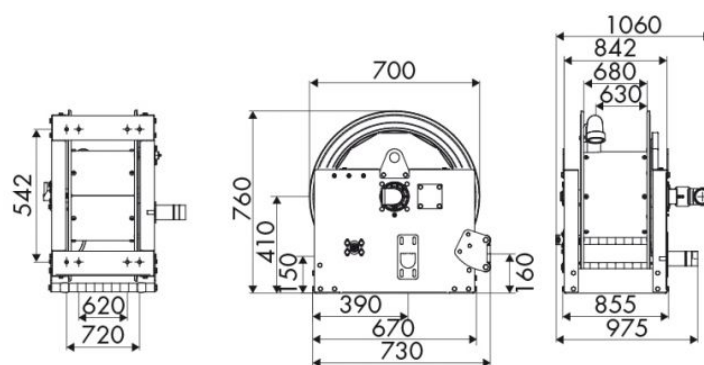
Industry, Mining, Lube trucks and transports

FEATURES

Pressure	70 bar
Compatible fluids	water - oil - diesel fuel - industrial fluid
Swivel joint	AISI 316 stainless steel
Seals	Viton®
Characteristic	hydraulic
Material	AISI 316 stainless steel
Couplings	-
Hose	-
ø e hose length	-
Inlet	G 2" (f)
Outlet	G 2" (f)
Reel flow path	AISI 316 stainless steel



OVERALL DIMENSIONS (mm)



FURTHER FEATURES

Capacity 3/8"	Capacity 1/2"	Capacity 3/4"	Capacity 1"	Capacity 1.1/4"	Capacity 1.1/2"	Capacity 2"
550 m	350 m	244 m	134 m	84 m	75 m	43 m