

## P/N 617/600

Hose reel with hydraulic motorisation s. 617 for diesel, 10 bar, without hose. Inlet-outlet G 1.1/2" (f)

### SECTORS OF USE

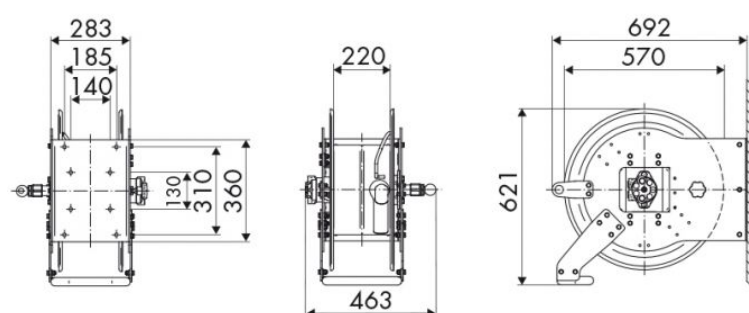
Industry, Mining, Lube trucks and transports

### FEATURES

Pressure	10 bar
Compatible fluids	diesel fuel
Swivel joint	brass
Seals	Viton®
Characteristic	hydraulic
Material	painted steel
Couplings	-
Hose	-
ø e hose length	-
Inlet	G 1.1/2" (f)
Outlet	G 1.1/2" (f)
Reel flow path	brass - zinc plated steel



### OVERALL DIMENSIONS (mm)



### FURTHER FEATURES

Capacity 3/8"	Capacity 1/2"	Capacity 5/8"	Capacity 3/4"	Capacity 1"	Capacity 1.1/4"	Capacity 1.1/2"
90 m	65 m	45 m	30 m	20 m	15 m	10 m