

P/N 637/400

Hose reel with hydraulic motorisation s. 637 for oil and similar, 150 bar, without hose. Inlet-outlet G 1" (f)

SECTORS OF USE

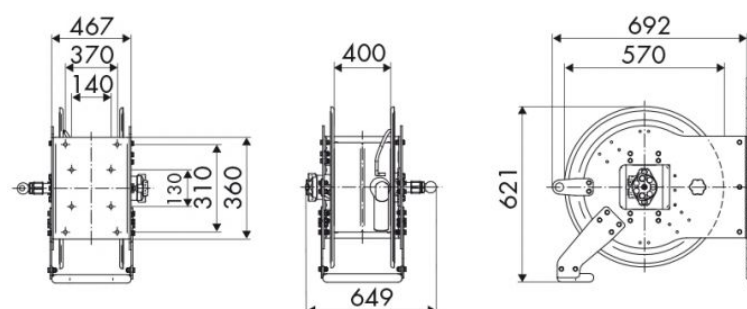
Industry, Mining, Lube trucks and transports

FEATURES

| | |
|-------------------|---------------------------|
| Pressure | 150 bar |
| Compatible fluids | oils and similar products |
| Swivel joint | zinc plated steel |
| Seals | polyurethane |
| Characteristic | hydraulic |
| Material | painted steel |
| Couplings | - |
| Hose | - |
| ø e hose length | - |
| Inlet | G 1" (f) |
| Outlet | G 1" (f) |
| Reel flow path | zinc plated steel |



OVERALL DIMENSIONS (mm)



FURTHER FEATURES

| Capacity 3/8" | Capacity 1/2" | Capacity 5/8" | Capacity 3/4" | Capacity 1" |
|---------------|---------------|---------------|---------------|-------------|
| 200 m | 150 m | 110 m | 75 m | 50 m |