

## P/N 741301/10

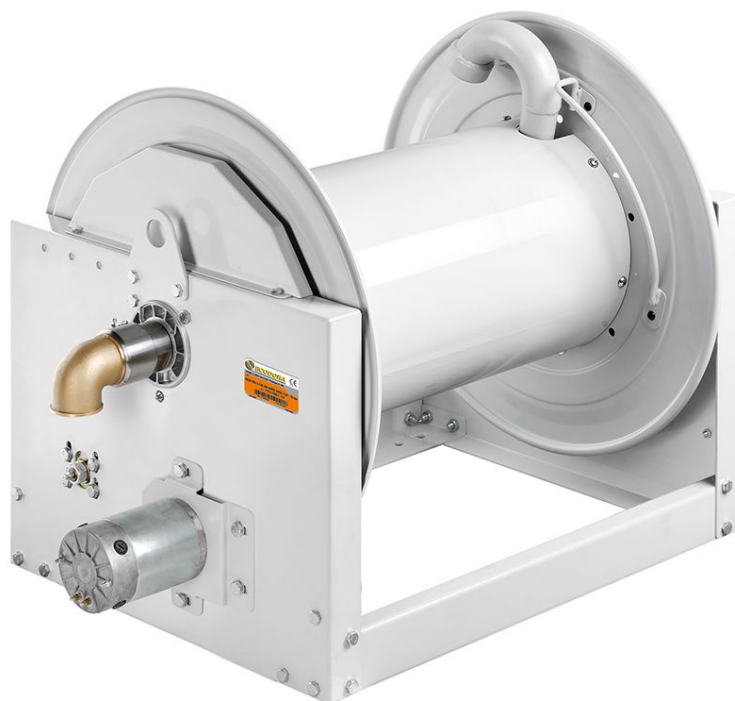
Hose reel with electric motorisation 24 V DC in painted steel s. 700, for air-water and diesel, 20 bar, without hose. Drum width 410 mm. Inlet-outlet G 2" (f)

### SECTORS OF USE

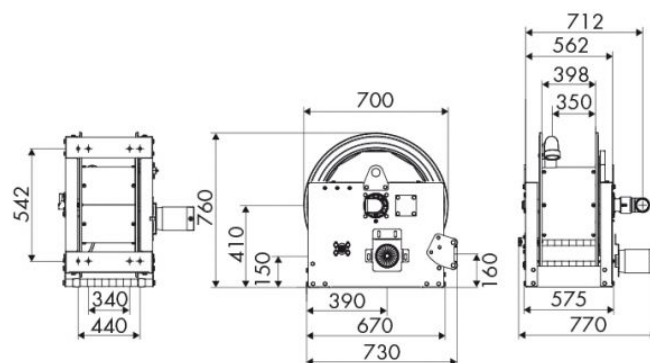
Industry, Mining, Lube trucks and transports

### FEATURES

Pressure	20 bar
Compatible fluids	air - water - diesel fuel
Swivel joint	aluminum
Seals	Viton®
Characteristic	electric 24 V DC
Material	painted steel
Couplings	-
Hose	-
Ø e hose length	-
Inlet	G 2" (f)
Outlet	G 2" (f)
Reel flow path	aluminum - zinc plated steel



### OVERALL DIMENSIONS (mm)



### FURTHER FEATURES

Capacity 3/8"	Capacity 1/2"	Capacity 3/4"	Capacity 1"	Capacity 1.1/4"	Capacity 1.1/2"	Capacity 2"
290 m	180 m	120 m	64 m	39 m	34 m	20 m