



Series  
430 ABS

Series  
530 ABS

Series  
540 ABS

ABS  
HOSE REELS  
No. E21-ABS





## HELP THE NATURE

Packaging contains, depending on the articles, one or more of the following materials; they must be recycled in accordance with current regulations in the country of use.

cardboard • polyethylene sack • polystyrene • paper • wood • nails  
• plastic strap • cellophane • clips • gummed paper



© **ECODORA**

ECODORA S.r.l. offers a wide range of equipment for fluid dynamics, designed to meet all customer's needs.

Quality, reliability and design that distinguish ECODORA brand are internationally recognized.

A technical service before and after sales suggests the most suitable product according to the customer's needs and provides support even to the end users.

ECODORA S.r.l. looks for a long lasting cooperation with the customers, paying attention to their expectations and offering highest quality products.



[www.ecodora.com](http://www.ecodora.com)  
[info@ecodora.com](mailto:info@ecodora.com)

CE Made in Italy

# INDEX

## ABS HOSE REELS

Page 8

AIR-WATER  
10-20 bar



Page 10

HOT WATER  
50-100 bar



ECODORA hose reels with ABS drum (Acrylonitrile Butadiene Styrene), fixing bracket and arms in **painted steel** or **AISI 304 stainless steel** are designed to ensure an efficient, handy and capacious product, which integrates **light weight** and **strength** while keeping costs down.

The high quality comes from the close selection of materials and care in design, to create a wide range of solutions suitable for **all conditions of use** with **various types of fluids**.

ECODORA hose reels with ABS drum are also compatible with **viscous** and **highly corrosive** or **flammable** fluids. Their use spans **several areas**, from cleaning to manufacturing, agriculture to marine, and many more. In the catalogue you'll find the item best suited to your needs. Choose it taking into account the fluid to be distributed, working pressure, distance to be covered, and hose diameter.

## Page 12

**HOT WATER**  
200-400 bar



## Page 14

**OIL AND SIMILAR**  
50-150 bar



## Page 16

**GREASE**  
400-600 bar



## Page 18

**DIESEL**  
10-20 bar



## Page 20

**AdBlue®**  
10-100 bar



## Page 22

**ACCESSORIES**



Our sales department is at your disposal to  
provide information and solutions.

[www.ecodora.com](http://www.ecodora.com)

## HOSE REELS WITH ABS DRUMS

Available version  
with bracket and arms  
in **AISI 304 stainless steel**.



They can be supplied with or without hose, with polyurethane (PU), black synthetic rubber or hygienic hose. All models with hose **include a 0,6 m inlet hose**. **Hose stop** is included also in the models without hose.

**Fixed and adjustable versions** are available. The hose reel has adjustable arms that can be easily rotated in 3 different positions, according to the specific needs.

The rewinding force is adjustable and allows the specific use for any needs of the different applications. The repeated stress-tests carried out on the spring demonstrate the long-lasting efficiency of the item.

All sliding parts, such as the bushings and the rack, are made of special technopolymers **tested for long-term use**.

Compatible with **many types of fluids**, even very **aggressive** and **suitable to be used in different sectors**: cleaning, manufacturing, agriculture, shipping and many others.

By adding a **special seal** on the spring-side bushing, the **530 and 540 Series** are easily certified with **IP55** rating.

# Technical characteristics

## FIXING BRACKET

Has 4 slotted holes for safe, easy installation.

## PAWL

Easy to remove for maintenance or when the work requires free sliding.

## STOP RACK

Makes it possible to lock the hose around every 0,5 m.

## SPRING

Tested to withstand over 20 000 work cycles.

## MULTI-POSITION ARMS

Hose outlet position can be changed manually by modifying the arms installation.

## ABS DRUM

Developed to be light, flexible and at the same time resistant to mechanical shocks.

## CENTRAL PIN

Available in different materials to ensure maximum chemical compatibility with a wide range of fluids.

## DRUM SUPPORT BUSHING

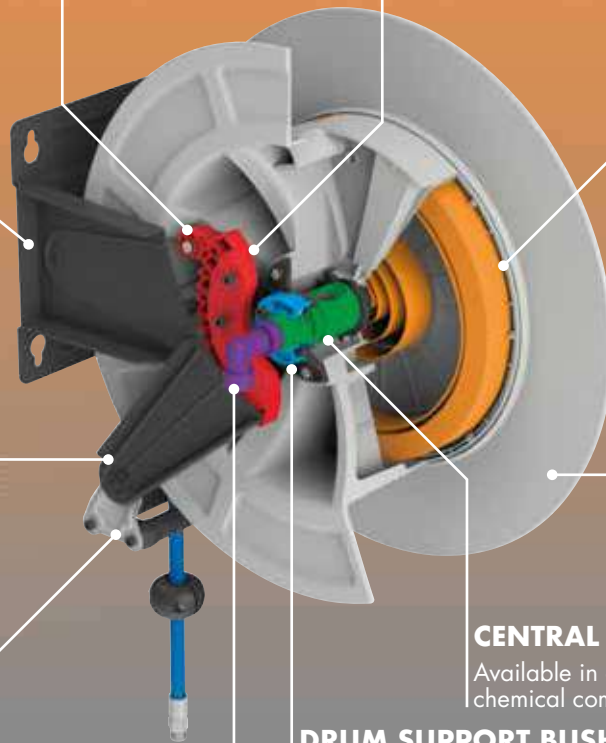
Made of self-lubricating technopolymer with excellent wear and corrosion resistance.

## SWIVEL JOINT

Designed to minimise load losses. Available in different materials to ensure maximum chemical compatibility with a wide range of fluids.

## HOSE GUIDE

Prevents hose wear due to its width and roller arrangement.



Type of fluid: **AIR-WATER**  
 Pressure: **10-20 bar**  
 Material: **PAINTED STEEL**  
**AISI 304 STAINLESS STEEL**



**PAINTED BRACKETS AND ARMS**



Series	P/N	Hose supplied	Connection		Weight (kg) (net/gross)
			Inlet	Outlet	
430 ABS 20 bar	4430/10	without hose *	G 1/2" (f)	G 1/2" (f)	10,2/13,5
	4430/11	12 m - 3/8" (952/13)	G 1/2" (f)	G 3/8" (m)	12,6/15,9
	4430/12	18 m - 3/8" (952/19)	G 1/2" (f)	G 3/8" (m)	13,5/16,8
	4430/13	10 m - 1/2" (962/10)	G 1/2" (f)	G 1/2" (m)	13,0/16,3
	4430/14	15 m - 1/2" (962/15)	G 1/2" (f)	G 1/2" (m)	14,0/17,3
	4438/11	10 m - 1/2" (961/11)	G 1/2" (f)	G 1/2" (m)	13,0/16,3
	4438/12	15 m - 1/2" (961/15)	G 1/2" (f)	G 1/2" (m)	14,0/17,3

Hose reel capacity without hose    inner hose ø max length    \*    5/16"    3/8"    1/2"

530 ABS 20 bar	4530/10	without hose *	G 1/2" (f)	G 1/2" (f)	14,2/18,2
	4530/11	20 m - 1/2" (962/20)	G 1/2" (f)	G 1/2" (m)	20,0/24,0
	4530/12	25 m - 1/2" (962/25)	G 1/2" (f)	G 1/2" (m)	20,4/24,4
	4530/15	without hose **	G 1" (f)	G 1" (f)	16,0/20,0
	4538/11	20 m - 1/2" (961/20)	G 1/2" (f)	G 1/2" (m)	19,7/23,7
	4538/12	25 m - 1/2" (961/25)	G 1/2" (f)	G 1/2" (m)	20,8/24,8

Hose reel capacity without hose    inner hose ø max length    \*    3/8"    1/2"    \*\*    5/8"    3/4"    1"

540 ABS 20 bar	4540/10	without hose *	G 1" (f)	G 1" (f)	18,4/23,4
	4540/11	15 m - 3/4" (972/15)	G 1" (f)	G 3/4" (m)	24,7/29,7
	4540/12	20 m - 3/4" (972/20)	G 1" (f)	G 3/4" (m)	26,4/31,4
	4540/13	15 m - 1" (982/15)	G 1" (f)	G 1" (m)	26,9/31,9
	4540/15	without hose **	G 1/2" (f)	G 1/2" (f)	17,0/22,0
	4540/16	30 m - 1/2" (962/30)	G 1/2" (f)	G 1/2" (m)	25,0/30,0

Hose reel capacity without hose    inner hose ø max length    \*    5/8"    3/4"    1"    \*\*    3/8"    1/2"

**AISI 304 S. STEEL BRACKETS AND ARMS**

AISI 304 s. steel central pin



Series	P/N	Hose supplied	Connection		Weight (kg) (net/gross)
			Inlet	Outlet	
430 ABS 20 bar	4432/10	without hose *	G 1/2" (f)	G 1/2" (f)	10,2/13,5
	4432/11	12 m - 3/8" (952/13)	G 1/2" (f)	G 3/8" (m)	12,6/15,9
	4432/12	18 m - 3/8" (952/19)	G 1/2" (f)	G 3/8" (m)	13,5/16,8
	4432/13	10 m - 1/2" (962/10)	G 1/2" (f)	G 1/2" (m)	13,0/16,3
	4432/14	15 m - 1/2" (962/15)	G 1/2" (f)	G 1/2" (m)	14,0/17,3
	4433/11	10 m - 1/2" (960/10)	G 1/2" (f)	G 1/2" (m)	12,6/15,9
10 bar	4433/12	15 m - 1/2" (960/15)	G 1/2" (f)	G 1/2" (m)	13,5/16,8

Hose reel capacity without hose    inner hose ø max length    \*    5/16"    3/8"    1/2"

530 ABS 20 bar	4532/10	without hose *	G 1/2" (f)	G 1/2" (f)	14,2/18,2
	4532/11	20 m - 1/2" (962/20)	G 1/2" (f)	G 1/2" (m)	20,0/24,0
	4532/12	25 m - 1/2" (962/25)	G 1/2" (f)	G 1/2" (m)	20,4/24,4
	4532/15	without hose **	G 1" (f)	G 1" (f)	16,0/20,0
	4533/12	25 m - 1/2" (960/25)	G 1/2" (f)	G 1/2" (m)	20,4/24,4

Hose reel capacity without hose    inner hose ø max length    \*    3/8"    1/2"    \*\*    5/8"    3/4"    1"

540 ABS 20 bar	4542/10	without hose *	G 1" (f)	G 1" (f)	18,4/23,4
	4542/11	15 m - 3/4" (972/15)	G 1" (f)	G 3/4" (m)	24,7/29,7
	4542/12	20 m - 3/4" (972/20)	G 1" (f)	G 3/4" (m)	26,4/31,4
	4542/13	15 m - 1" (982/15)	G 1" (f)	G 1" (m)	26,9/31,9
	4542/15	without hose **	G 1/2" (f)	G 1/2" (f)	17,0/22,0
	4542/16	30 m - 1/2" (962/30)	G 1/2" (f)	G 1/2" (m)	25,0/30,0

Hose reel capacity without hose    inner hose ø max length    \*    5/8"    3/4"    1"    \*\*    3/8"    1/2"



In accordance with directive



**FIXED\***

\* Swivelling by adding the special bracket (see page 25)

Drum colours			
ABS		<b>RAL 1004</b>	<b>standard</b>
		RAL 7015	
		RAL 3020	
		RAL 5002	
		RAL 9005	

Hoses			Connections	Seals	Swivel joint	Central pin
black rubber	hygienic rubber	polyurethane	galvanized steel	Viton®	brass	galvanized steel
						AISI 304 s. steel
0,6 m inlet hose included						

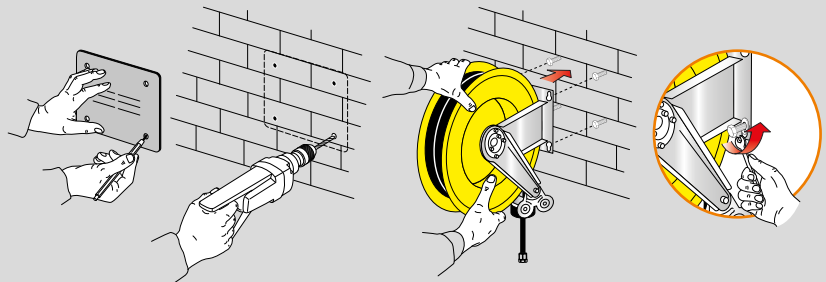
Dimensions (mm)	Series	A	B	C	D	E	F	G	H	I	Packaging (mm) W x D x H
	<b>430 ABS</b>	186	140	197	226	110	450	425	461	259	580 x 280 x 590
	<b>530 ABS</b>	203	153	221	258	121	535	510	558	327	650 x 290 x 700
	<b>540 ABS</b>	300	218	227	268	183	535	510	573	327	660 x 390 x 690

(W: width - D: depth - H: height)

## Wall mounting

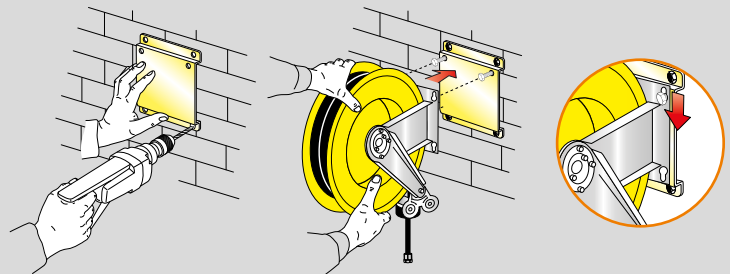
### TEMPLATE

The solid and compact fixed bracket, included with the hose reel, is provided with 4 slotted mounting holes for easy and safe installation. Using the template supplied with the hose reel it's easier to mark plugs holes for hose reel fixing.



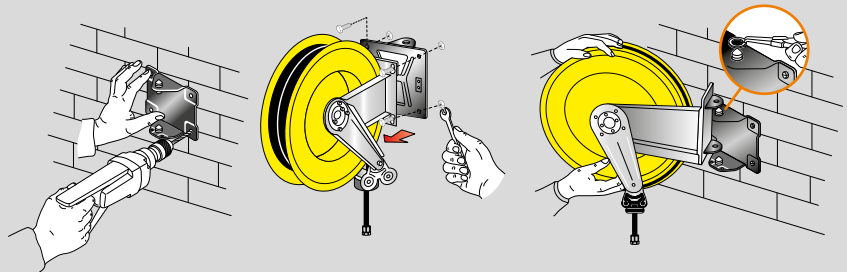
### FIXED BRACKET

On request an additional bracket for a quick installation and disassembly is available. Furthermore this bracket allows installing several hose reels in series. The P/N takes the suffix "/SM". For example: 300/10 becomes 300/10/SM.



### SWIVELLING BRACKET

On request a swivelling bracket to make the reel turning 40° to the right and 40° to the left is available. The P/N takes the suffix "/SO". For example: 300/10 becomes 300/10/SO.



Type of fluid: **HOT WATER**  
 Pressure: **50-100 bar**  
 Material: **PAINTED STEEL**  
**AISI 304 STAINLESS STEEL**



**PAINTED BRACKETS AND ARMS**



Series	P/N	Hose supplied	Connection		Weight (kg) (net/gross)
			Inlet	Outlet	

430 ABS 100 bar	4430/20	without hose *	G 1/2" (f)	G 1/2" (f)	10,2/13,5
	4430/21	10 m - 1/2" (963/12)	G 1/2" (f)	G 1/2" (m)	14,8/18,1
	4430/22	15 m - 1/2" (963/14)	G 1/2" (f)	G 1/2" (m)	16,2/19,5
	4431/22	15 m - 1/2" (964/15)	G 1/2" (f)	G 1/2" (m)	16,2/19,5

Hose reel capacity without hose	inner hose ø max length	* 5/16"	3/8"	1/2"
		20 m	20 m	16 m

530 ABS 100 bar	4530/20	without hose *	G 1/2" (f)	G 1/2" (f)	14,2/18,2
	4530/21	20 m - 1/2" (963/19)	G 1/2" (f)	G 1/2" (m)	22,8/26,8
	4530/22	25 m - 1/2" (963/24)	G 1/2" (f)	G 1/2" (m)	24,1/28,1
	4530/25	without hose **	G 1" (f)	G 1" (f)	16,0/20,0
	4531/22	25 m - 1/2" (964/25)	G 1/2" (f)	G 1/2" (m)	23,6/27,6

Hose reel capacity without hose	inner hose ø max length	* 3/8"	1/2"	** 5/8"	3/4"	1"
		25 m	25 m	20 m	12 m	8 m

540 ABS 100 bar	4540/20	without hose *	G 1" (f)	G 1" (f)	18,4/23,4
	4540/21	15 m - 3/4" (973/14)	G 1" (f)	G 3/4" (m)	28,3/33,3
	4540/22	20 m - 3/4" (973/19)	G 1" (f)	G 3/4" (m)	30,7/35,7
	4540/25	without hose **	G 1/2" (f)	G 1/2" (f)	17,0/22,0
	4541/21	15 m - 3/4" (974/15)	G 1" (f)	G 3/4" (f)	28,3/33,3
	4541/22	20 m - 3/4" (974/20)	G 1" (f)	G 3/4" (f)	30,7/35,7
50 bar	4540/23	15 m - 1" (983/15)	G 1" (f)	G 1" (m)	31,9/36,9
	4541/23	15 m - 1" (984/14)	G 1" (f)	G 1" (m)	31,9/36,9

Hose reel capacity without hose	inner hose ø max length	* 5/8"	3/4"	1"	** 3/8"	1/2"
		20 m	22 m	15 m	30 m	30 m

**AISI 304 S. STEEL BRACKETS AND ARMS**

AISI 304 s. steel  
central pin



Series	P/N	Hose supplied	Connection		Weight (kg) (net/gross)
			Inlet	Outlet	

430 ABS 100 bar	4434/20	without hose *	G 1/2" (f)	G 1/2" (f)	10,2/13,5
	4432/21	10 m - 1/2" (963/12)	G 1/2" (f)	G 1/2" (m)	14,8/18,1
	4432/22	15 m - 1/2" (963/14)	G 1/2" (f)	G 1/2" (m)	16,2/19,5
	4433/22	15 m - 1/2" (964/15)	G 1/2" (f)	G 1/2" (m)	16,2/19,5

Hose reel capacity without hose	inner hose ø max length	* 5/16"	3/8"	1/2"
		20 m	20 m	16 m

530 ABS 100 bar	4534/20	without hose *	G 1/2" (f)	G 1/2" (f)	14,2/18,2
	4532/21	20 m - 1/2" (963/19)	G 1/2" (f)	G 1/2" (m)	22,8/26,8
	4532/22	25 m - 1/2" (963/24)	G 1/2" (f)	G 1/2" (m)	24,1/28,1
	4533/22	25 m - 1/2" (964/25)	G 1/2" (f)	G 1/2" (m)	23,6/27,6
	4534/25	without hose **	G 1" (f)	G 1" (f)	16,0/20,0

Hose reel capacity without hose	inner hose ø max length	* 3/8"	1/2"	** 5/8"	3/4"	1"
		25 m	25 m	20 m	12 m	8 m

540 ABS 100 bar	4544/20	without hose *	G 1" (f)	G 1" (f)	18,4/23,4
	4542/21	15 m - 3/4" (973/14)	G 1" (f)	G 3/4" (m)	28,3/33,3
	4542/22	20 m - 3/4" (973/19)	G 1" (f)	G 3/4" (m)	30,7/35,7
	4543/21	15 m - 3/4" (974/15)	G 1" (f)	G 3/4" (f)	28,3/33,3
	4543/22	20 m - 3/4" (974/20)	G 1" (f)	G 3/4" (f)	30,7/35,7
	4544/25	without hose **	G 1/2" (f)	G 1/2" (f)	17,0/22,0
50 bar	4542/23	15 m - 1" (983/15)	G 1" (f)	G 1" (m)	31,9/36,9
	4543/23	15 m - 1" (984/14)	G 1" (f)	G 1" (m)	31,9/36,9

Hose reel capacity without hose	inner hose ø max length	* 5/8"	3/4"	1"	** 3/8"	1/2"
		20 m	22 m	15 m	30 m	30 m

Hygienic hose

Black rubber hose

In accordance with directive



**FIXED\***

\* Swivelling by adding the special bracket (see page 25)

Drum colours			
ABS		<b>RAL 1004</b>	<b>standard</b>
		RAL 7015	
		RAL 3020	
		RAL 5002	
		RAL 9005	

Hoses		Connections	Seals	Swivel joint	Central pin
black rubber	hygienic rubber	galvanized steel	Viton®	AISI 304 stainless steel	galvanized steel
					AISI 304 s. steel
0,6 m inlet hose included					

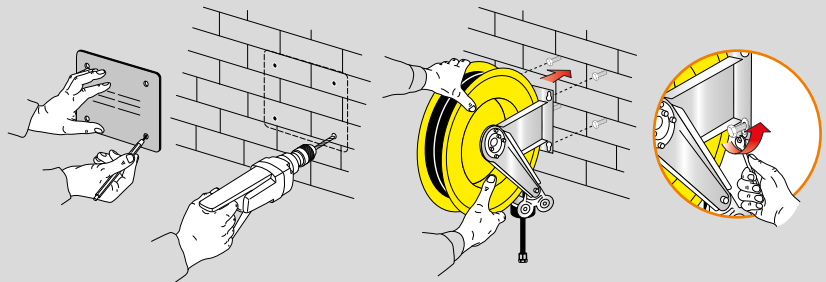
Dimensions (mm)	Series	A	B	C	D	E	F	G	H	I	Packaging (mm) W x D x H
	<b>430 ABS</b>	186	140	197	226	110	450	425	461	259	580 x 280 x 590
	<b>530 ABS</b>	203	153	221	258	121	535	510	558	327	650 x 290 x 700
	<b>540 ABS</b>	300	218	227	268	183	535	510	573	327	660 x 390 x 690

(W: width - D: depth - H: height)

## Wall mounting

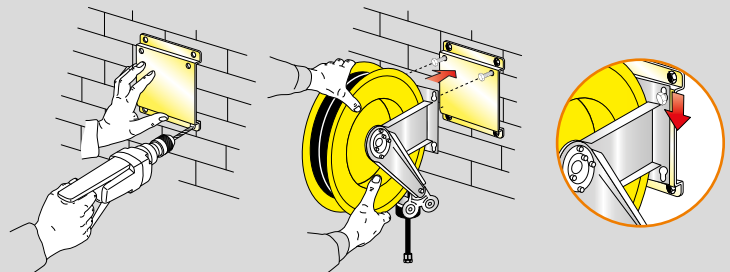
### TEMPLATE

The solid and compact fixed bracket, included with the hose reel, is provided with 4 slotted mounting holes for easy and safe installation. Using the template supplied with the hose reel it's easier to mark plugs holes for hose reel fixing.



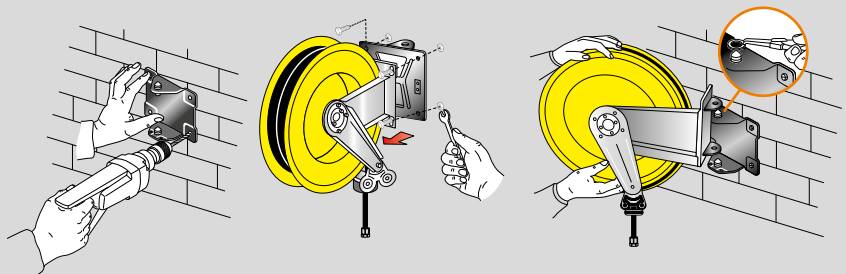
### FIXED BRACKET

On request an additional bracket for a quick installation and disassembly is available. Furthermore this bracket allows installing several hose reels in series. The P/N takes the suffix "/SM". For example: 300/10 becomes 300/10/SM.



### SWIVELLING BRACKET

On request a swivelling bracket to make the reel turning 40° to the right and 40° to the left is available. The P/N takes the suffix "/SO". For example: 300/10 becomes 300/10/SO.



Type of fluid: **HOT WATER**  
 Pressure: **200-400 bar**  
 Material: **PAINTED STEEL**  
**AISI 304 STAINLESS STEEL**



**PAINTED BRACKETS AND ARMS**



Series	P/N	Hose supplied	Connection		Weight (kg) (net/gross)
			Inlet	Outlet	
430 ABS 200 bar	4430/30	without hose *	G 3/8" (f)	G 1/2" (f)	10,2/13,5
	4430/31	12 m - 3/8" (955/12)	G 3/8" (f)	G 3/8" (f)	14,4/17,7
	4430/32	18 m - 3/8" (955/18)	G 3/8" (f)	G 3/8" (f)	15,6/18,9
	4431/32	18 m - 3/8" (956/18)	G 3/8" (f)	G 3/8" (f)	15,8/19,1
430 ABS 400 bar	4430/35	without hose **	G 3/8" (f)	G 1/2" (f)	10,2/13,5
	4430/38	10 m - 3/8" (907/10)	G 3/8" (f)	G 3/8" (f)	14,8/18,1
	4430/39	15 m - 3/8" (907/15)	G 3/8" (f)	G 3/8" (f)	17,2/20,5

Hose reel capacity without hose    inner hose ø max length    \*    5/16"    3/8"    1/2"    \*\*    5/16"    3/8"

530 ABS 200 bar	4530/30	without hose *	G 3/8" (f)	G 1/2" (f)	14,2/18,2
	4530/31	20 m - 3/8" (955/20)	G 3/8" (f)	G 3/8" (f)	20,1/24,1
	4530/32	25 m - 3/8" (955/25)	G 3/8" (f)	G 3/8" (m)	21,6/25,6
	4531/32	25 m - 3/8" (956/25)	G 3/8" (f)	G 3/8" (m)	21,8/25,8
530 ABS 400 bar	4530/35	without hose **	G 3/8" (f)	G 1/2" (f)	14,2/18,2
	4530/37	25 m - 3/8" (907/25)	G 3/8" (f)	G 3/8" (f)	24,9/28,9

Hose reel capacity without hose    inner hose ø max length    \*    3/8"    1/2"    \*\*    3/8"    1/2"

540 ABS 200 bar	4540/30	without hose *	G 3/8" (f)	G 1/2" (f)	17,1/22,1
	4540/31	30 m - 3/8" (955/30)	G 3/8" (f)	G 3/8" (f)	25,8/30,8
	4541/31	30 m - 3/8" (956/30)	G 3/8" (f)	G 3/8" (f)	25,8/30,8
540 ABS 400 bar	4540/35	without hose **	G 3/8" (f)	G 1/2" (f)	17,1/22,1
	4540/36	30 m - 3/8" (907/30)	G 3/8" (f)	G 3/8" (f)	30,1/35,1

Hose reel capacity without hose    inner hose ø max length    \*    3/8"    1/2"    \*\*    3/8"    1/2"

**AISI 304 S. STEEL BRACKETS AND ARMS**

AISI 304 s. steel central pin



Series	P/N	Hose supplied	Connection		Weight (kg) (net/gross)
			Inlet	Outlet	
430 ABS 200 bar	4434/30	without hose *	G 3/8" (f)	G 1/2" (f)	10,2/13,5
	4432/31	12 m - 3/8" (955/12)	G 3/8" (f)	G 3/8" (f)	14,4/17,7
	4432/32	18 m - 3/8" (955/18)	G 3/8" (f)	G 3/8" (f)	15,6/18,9
	4433/32	18 m - 3/8" (956/18)	G 3/8" (f)	G 3/8" (f)	15,8/19,1
430 ABS 400 bar	4434/35	without hose **	G 3/8" (f)	G 1/2" (f)	10,2/13,5
	4432/38	10 m - 3/8" (907/10)	G 3/8" (f)	G 3/8" (f)	14,8/18,1
	4432/39	15 m - 3/8" (907/15)	G 3/8" (f)	G 3/8" (f)	17,2/20,5

Hose reel capacity without hose    inner hose ø max length    \*    5/16"    3/8"    1/2"    \*\*    5/16"    3/8"

530 ABS 200 bar	4534/30	without hose *	G 3/8" (f)	G 1/2" (f)	14,2/18,2
	4532/31	20 m - 3/8" (955/20)	G 3/8" (f)	G 3/8" (f)	20,1/24,1
	4532/32	25 m - 3/8" (955/25)	G 3/8" (f)	G 3/8" (m)	21,6/25,6
	4533/32	25 m - 3/8" (956/25)	G 3/8" (f)	G 3/8" (m)	21,8/25,8
530 ABS 400 bar	4534/35	without hose *	G 3/8" (f)	G 1/2" (f)	14,2/18,2
	4532/37	25 m - 3/8" (907/25)	G 3/8" (f)	G 3/8" (f)	24,9/28,9
	4533/37	25 m - 3/8" (906/25)	G 3/8" (f)	G 3/8" (m)	24,9/28,9

Hose reel capacity without hose    inner hose ø max length    \*    3/8"    1/2"    \*\*    3/8"    1/2"

540 ABS 200 bar	4544/30	without hose *	G 3/8" (f)	G 1/2" (f)	18,4/23,4
	4542/31	30 m - 3/8" (955/30)	G 3/8" (f)	G 3/8" (f)	27,1/32,1
	4543/31	30 m - 3/8" (956/30)	G 3/8" (f)	G 3/8" (f)	27,1/32,1
540 ABS 400 bar	4542/36	30 m - 3/8" (907/30)	G 3/8" (f)	G 3/8" (f)	31,4/36,4
	4544/35	without hose **	G 3/8" (f)	G 1/2" (f)	18,4/23,4

Hose reel capacity without hose    inner hose ø max length    \*    3/8"    1/2"    \*\*    3/8"    1/2"

Hygienic hose    Black rubber hose

In accordance with directive



**FIXED\***

\* Swivelling by adding the special bracket (see page 25)

Drum colours			
ABS		<b>RAL 1004</b>	<b>standard</b>
		RAL 7015	
		RAL 3020	
		RAL 5002	
		RAL 9005	

Hoses		Connections	Seals	Swivel joint	Central pin
black rubber	hygienic rubber	galvanized steel	Viton®-Teflon®	AISI 304 stainless steel	galvanized steel
					AISI 304 s. steel
0,6 m inlet hose included					

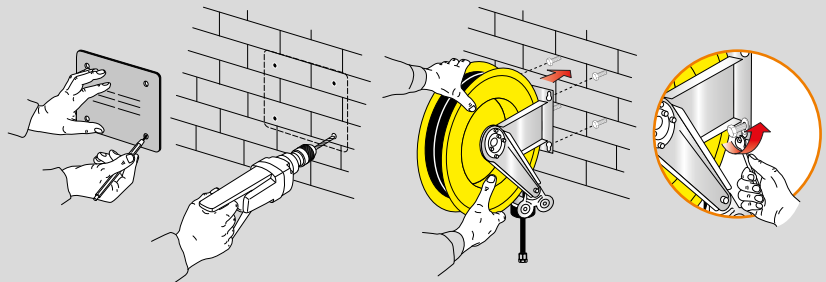
Dimensions (mm)	Series	A	B	C	D	E	F	G	H	I	Packaging (mm) W x D x H
	<b>430 ABS</b>	186	140	197	226	110	450	425	461	259	580 x 280 x 590
	<b>530 ABS</b>	203	153	221	258	121	535	510	558	327	650 x 290 x 700
	<b>540 ABS</b>	300	218	227	268	183	535	510	573	327	660 x 390 x 690

(W: width - D: depth - H: height)

## Wall mounting

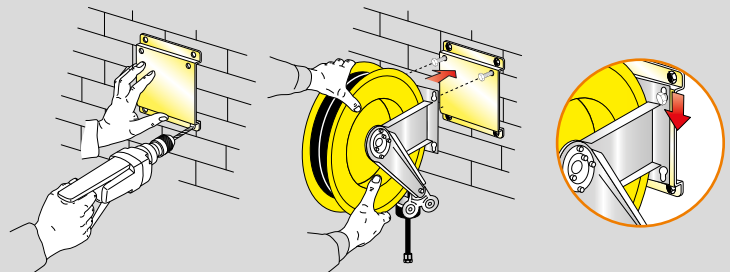
### TEMPLATE

The solid and compact fixed bracket, included with the hose reel, is provided with 4 slotted mounting holes for easy and safe installation. Using the template supplied with the hose reel it's easier to mark plugs holes for hose reel fixing.



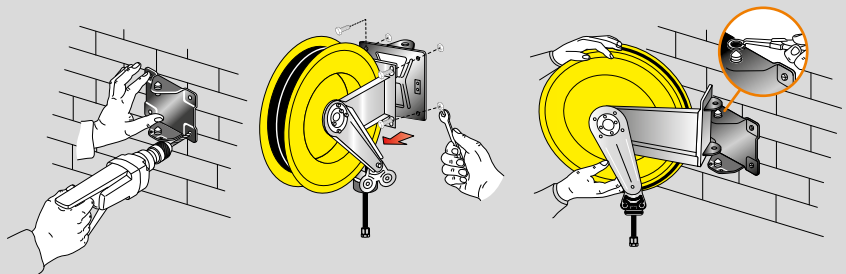
### FIXED BRACKET

On request an additional bracket for a quick installation and disassembly is available. Furthermore this bracket allows installing several hose reels in series. The P/N takes the suffix "/SM". For example: 300/10 becomes 300/10/SM.



### SWIVELLING BRACKET

On request a swivelling bracket to make the reel turning 40° to the right and 40° to the left is available. The P/N takes the suffix "/SO". For example: 300/10 becomes 300/10/SO.



Type of fluid: **OIL AND SIMILAR**  
 Pressure: **50-150 bar**  
 Material: **PAINTED STEEL**  
**AISI 304 STAINLESS STEEL**



**PAINTED BRACKETS AND ARMS**



Series	P/N	Hose supplied	Connection		Weight (kg) (net/gross)
			Inlet	Outlet	
430 ABS 150 bar for suction	4430/40	without hose *	G 1/2" (f)	G 1/2" (f)	10,2/13,5
	4430/41	10 m - 1/2" (963/11)	G 1/2" (f)	G 1/2" (m)	14,2/17,5
	4430/42	15 m - 1/2" (963/15)	G 1/2" (f)	G 1/2" (m)	16,4/19,7
	4430/40/AS	without hose *	G 1/2" (f)	G 1/2" (f)	10,2/13,5
430 ABS 100 bar	4430/415	without hose **	G 1/2" (f)	G 1/2" (m)	10,7/14,0
	4430/416	10 m - 5/8" (993/310)	G 3/4" (f)	G 3/4" (m)	15,6/18,9
	4430/417	8 m - 3/4" (973/308)	G 3/4" (f)	G 3/4" (m)	15,6/18,9
Hose reel capacity without hose    inner hose ø max length    *    5/16"    3/8"    1/2"    **    5/8"    3/4"					
20 m    20 m    16 m    14 m    8 m					
530 ABS 150 bar	4530/40	without hose *	G 1/2" (f)	G 1/2" (f)	14,2/18,2
	4530/41	20 m - 1/2" (963/20)	G 1/2" (f)	G 1/2" (m)	22,3/26,3
	4530/42	25 m - 1/2" (963/25)	G 1/2" (f)	G 1/2" (m)	24,2/28,2
530 ABS 100 bar	4530/415	without hose **	G 1" (f)	G 1" (f)	16,0/20,0
	4530/416	12 m - 3/4" (973/312)	G 1" (f)	G 3/4" (m)	21,5/25,5
Hose reel capacity without hose    inner hose ø max length    *    3/8"    1/2"    **    3/4"    1"					
25 m    25 m    12 m    8 m					
540 ABS 150 bar	4540/40	without hose *	G 1" (f)	G 1" (f)	18,4/23,4
	4540/45	without hose **	G 1/2" (f)	G 1/2" (f)	17,1/22,1
	4540/46	30 m - 1/2" (963/30)	G 1/2" (f)	G 1/2" (m)	28,8/33,8
540 ABS 100 bar	4540/411	15 m - 3/4" (973/315)	G 1" (f)	G 3/4" (m)	28,1/33,1
	4540/412	20 m - 3/4" (973/320)	G 1" (f)	G 3/4" (m)	30,7/35,7
540 ABS 50 bar	4540/413	15 m - 1" (983/315)	G 1" (f)	G 1" (f)	32,7/37,7
	4540/414	10 m - 1" (983/310)	G 1" (f)	G 1" (f)	27,6/32,6
Hose reel capacity without hose    inner hose ø max length    *    3/4"    1"    **    3/8"    1/2"					
22 m    15 m    30 m    30 m					

**AISI 304 S. STEEL BRACKETS AND ARMS**

AISI 304 s. steel central pin



Series	P/N	Hose supplied	Connection		Weight (kg) (net/gross)
			Inlet	Outlet	
430 ABS 150 bar	4434/20	without hose *	G 1/2" (f)	G 1/2" (f)	10,2/13,5
	4434/41	10 m - 1/2" (963/11)	G 1/2" (f)	G 1/2" (m)	14,2/17,5
	4432/42	15 m - 1/2" (963/15)	G 1/2" (f)	G 1/2" (m)	16,4/19,7
Hose reel capacity without hose    inner hose ø max length    *    5/16"    3/8"    1/2"					
20 m    20 m    16 m					
530 ABS 150 bar	4534/20	without hose *	G 1/2" (f)	G 1/2" (f)	14,2/18,2
	4532/41	20 m - 1/2" (963/20)	G 1/2" (f)	G 1/2" (m)	22,3/26,3
	4532/21	20 m - 1/2" (963/19)	G 1/2" (f)	G 1/2" (m)	22,8/26,8
	4532/22	25 m - 1/2" (963/24)	G 1/2" (f)	G 1/2" (m)	24,1/28,1
	4534/25	without hose **	G 1" (f)	G 1" (f)	16,0/20,0
Hose reel capacity without hose    inner hose ø max length    *    3/8"    1/2"    **    5/8"    3/4"    1"					
25 m    25 m    20 m    12 m    8 m					
540 ABS 150 bar	4544/20	without hose *	G 1" (f)	G 1" (f)	18,4/23,4
	4544/25	without hose **	G 1/2" (f)	G 1/2" (f)	17,1/22,1
	4542/46	30 m - 1/2" (963/30)	G 1/2" (f)	G 1/2" (m)	28,8/33,8
540 ABS 100 bar	4542/411	15 m - 3/4" (973/315)	G 1" (f)	G 3/4" (m)	28,1/33,1
	4542/412	20 m - 3/4" (973/320)	G 1" (f)	G 3/4" (m)	30,7/35,7
540 ABS 50 bar	4542/413	15 m - 1" (983/315)	G 1" (f)	G 1" (f)	32,7/37,7
	4542/414	10 m - 1" (983/310)	G 1" (f)	G 1" (f)	27,6/32,6
Hose reel capacity without hose    inner hose ø max length    *    3/4"    1"    **    3/8"    1/2"					
22 m    15 m    30 m    30 m					

In accordance with directive



**FIXED\***

\* Swivelling by adding the special bracket (see page 25)

Drum colours			
ABS		<b>RAL 1004</b>	<b>standard</b>
		RAL 7015	
		RAL 3020	
		RAL 5002	
		RAL 9005	

Hoses	Connections	Seals	Swivel joint	Central pin
black rubber	galvanized steel	polyurethane	galvanized steel	galvanized steel
		Viton®	AISI 304 s. steel	AISI 304 s. steel
0,6 m inlet hose included				

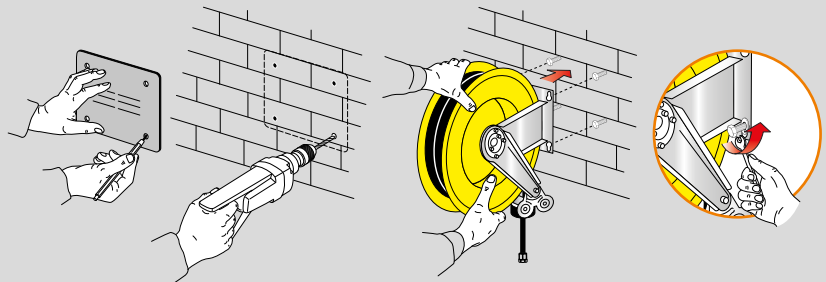
Dimensions (mm)	Series	A	B	C	D	E	F	G	H	I	Packaging (mm) W x D x H
	<b>430 ABS</b>	186	140	197	226	110	450	425	461	259	580 x 280 x 590
	<b>530 ABS</b>	203	153	221	258	121	535	510	558	327	650 x 290 x 700
	<b>540 ABS</b>	300	218	227	268	183	535	510	573	327	660 x 390 x 690

(W: width - D: depth - H: height)

## Wall mounting

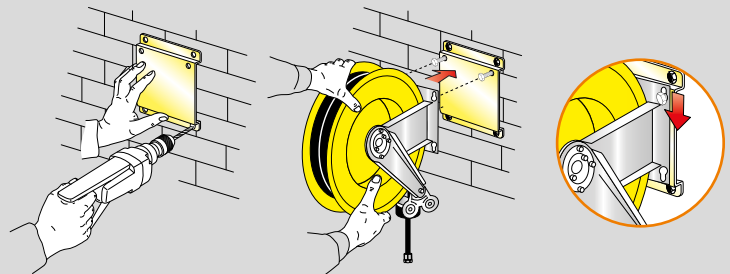
### TEMPLATE

The solid and compact fixed bracket, included with the hose reel, is provided with 4 slotted mounting holes for easy and safe installation. Using the template supplied with the hose reel it's easier to mark plugs holes for hose reel fixing.



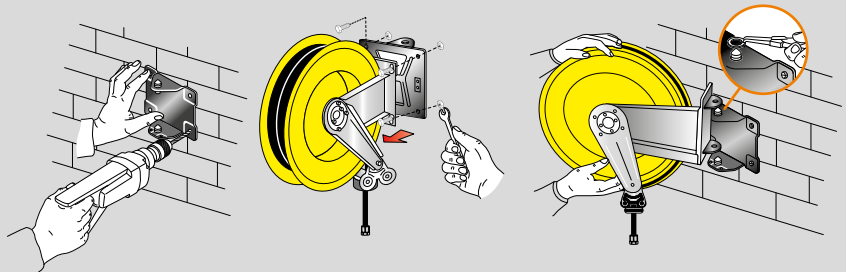
### FIXED BRACKET

On request an additional bracket for a quick installation and disassembly is available. Furthermore this bracket allows installing several hose reels in series. The P/N takes the suffix "/SM". For example: 300/10 becomes 300/10/SM.



### SWIVELLING BRACKET

On request a swivelling bracket to make the reel turning 40° to the right and 40° to the left is available. The P/N takes the suffix "/SO". For example: 300/10 becomes 300/10/SO.



Type of fluid: **GREASE**  
 Pressure: **400-600 bar**  
 Material: **PAINTED STEEL**  
**AISI 304 STAINLESS STEEL**



**PAINTED BRACKETS AND ARMS**



Series	P/N	Hose supplied	Connection		Weight (kg) (net/gross)
			Inlet	Outlet	
430 ABS 600 bar	4430/50	without hose *	G 3/8" (f)	G 1/2" (f)	10,2/13,5
	4430/51	12 m - 1/4" (935/13)	G 3/8" (f)	G 1/4" (m)	14,0/17,3
430 ABS 400 bar	4430/52	18 m - 1/4" (935/18)	G 3/8" (f)	G 1/4" (m)	15,8/19,1
	4430/55	10 m - 3/8" (957/10)	G 3/8" (f)	G 1/4" (m)	14,8/18,1
	4430/56	15 m - 3/8" (957/15)	G 3/8" (f)	G 1/4" (m)	16,6/19,9
Hose reel capacity without hose		$\frac{\text{inner hose } \varnothing}{\text{max length}}$	* $\frac{5/16"}{12 \text{ m}}$	$\frac{3/8"}{15 \text{ m}}$	

530 ABS 600 bar	4530/50	without hose *	G 3/8" (f)	G 1/2" (f)	14,2/18,2
	4530/51	20 m - 3/8" (957/20)	G 3/8" (f)	G 1/4" (m)	22,7/26,7
400 bar	4530/52	25 m - 3/8" (957/25)	G 3/8" (f)	G 1/4" (m)	24,7/28,7
	Hose reel capacity without hose		$\frac{\text{inner hose } \varnothing}{\text{max length}}$	* $\frac{3/8"}{25 \text{ m}}$	$\frac{1/2"}{25 \text{ m}}$

540 ABS 600 bar	4540/50	without hose *	G 3/8" (f)	G 1/2" (f)	17,1/22,1
	4540/51	30 m - 3/8" (957/30)	G 3/8" (f)	G 1/4" (m)	30,1/35,1
Hose reel capacity without hose		$\frac{\text{inner hose } \varnothing}{\text{max length}}$	* $\frac{3/8"}{30 \text{ m}}$	$\frac{1/2"}{30 \text{ m}}$	

**AISI 304 S. STEEL BRACKETS AND ARMS**

AISI 304 s. steel  
central pin



Series	P/N	Hose supplied	Connection		Weight (kg) (net/gross)
			Inlet	Outlet	
430 ABS 600 bar	4432/50	without hose *	G 3/8" (f)	G 1/2" (f)	10,2/13,5
	4432/51	12 m - 1/4" (935/13)	G 3/8" (f)	G 1/4" (m)	14,0/17,3
430 ABS 400 bar	4432/52	18 m - 1/4" (935/18)	G 3/8" (f)	G 1/4" (m)	15,8/19,1
	4432/55	10 m - 3/8" (957/10)	G 3/8" (f)	G 1/4" (m)	14,8/18,1
	4432/56	15 m - 3/8" (957/15)	G 3/8" (f)	G 1/4" (m)	16,6/19,9
Hose reel capacity without hose		$\frac{\text{inner hose } \varnothing}{\text{max length}}$	* $\frac{5/16"}{12 \text{ m}}$	$\frac{3/8"}{15 \text{ m}}$	

530 ABS 600 bar	4532/50	without hose *	G 3/8" (f)	G 1/2" (f)	14,2/18,2
	Hose reel capacity without hose		$\frac{\text{inner hose } \varnothing}{\text{max length}}$	* $\frac{3/8"}{25 \text{ m}}$	$\frac{1/2"}{25 \text{ m}}$

540 ABS 600 bar	4542/50	without hose *	G 3/8" (f)	G 1/2" (f)	17,1/22,1
	4542/51	30 m - 3/8" (957/30)	G 3/8" (f)	G 1/4" (m)	30,1/35,1
Hose reel capacity without hose		$\frac{\text{inner hose } \varnothing}{\text{max length}}$	* $\frac{3/8"}{30 \text{ m}}$	$\frac{1/2"}{30 \text{ m}}$	

Black rubber hose



In accordance with directive



**FIXED\***

\* Swivelling by adding the special bracket (see page 25)

Drum colours			
ABS		<b>RAL 1004</b>	<b>standard</b>
		RAL 7015	
		RAL 3020	
		RAL 5002	
		RAL 9005	

Hoses	Connections	Seals	Swivel joint	Central pin
black rubber	galvanized steel	polyurethane	galvanized steel	galvanized steel
0,6 m inlet hose included				

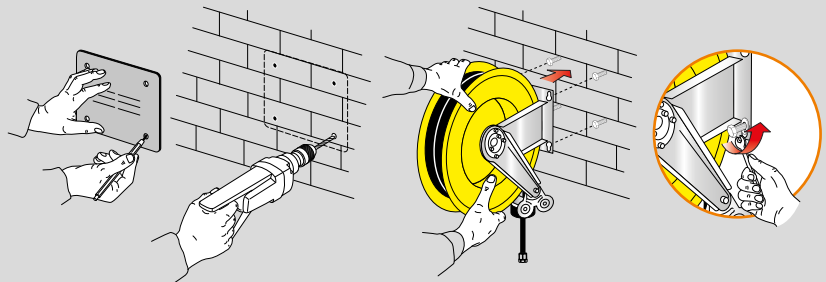
Dimensions (mm)	Series	A	B	C	D	E	F	G	H	I	Packaging (mm) W x D x H
	<b>430 ABS</b>	186	140	197	226	110	450	425	461	259	580 x 280 x 590
	<b>530 ABS</b>	203	153	221	258	121	535	510	558	327	650 x 290 x 700
	<b>540 ABS</b>	300	218	227	268	183	535	510	573	327	660 x 390 x 690

(W: width - D: depth - H: height)

## Wall mounting

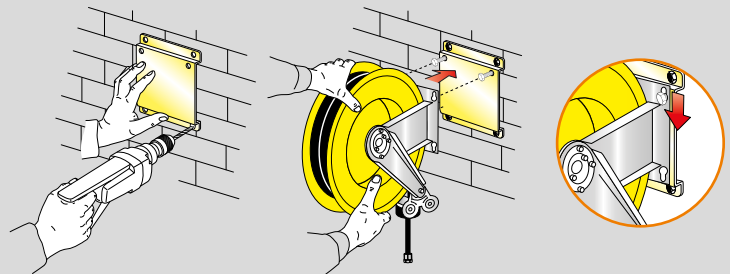
### TEMPLATE

The solid and compact fixed bracket, included with the hose reel, is provided with 4 slotted mounting holes for easy and safe installation. Using the template supplied with the hose reel it's easier to mark plugs holes for hose reel fixing.



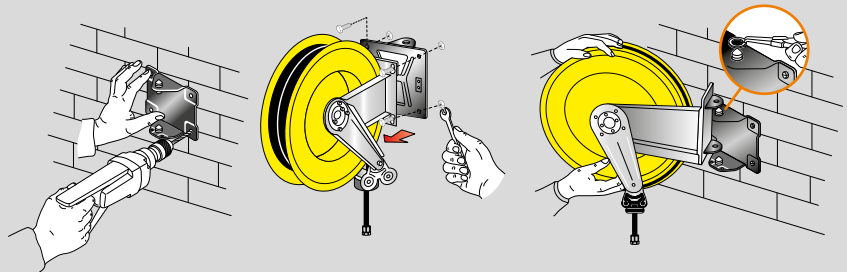
### FIXED BRACKET

On request an additional bracket for a quick installation and disassembly is available. Furthermore this bracket allows installing several hose reels in series. The P/N takes the suffix "/SM". For example: 300/10 becomes 300/10/SM.



### SWIVELLING BRACKET

On request a swivelling bracket to make the reel turning 40° to the right and 40° to the left is available. The P/N takes the suffix "/SO". For example: 300/10 becomes 300/10/SO.



Type of fluid: **DIESEL**  
 Pressure: **10-20 bar**  
 Material: **PAINTED STEEL**  
**AISI 304 STAINLESS STEEL**



**PAINTED BRACKETS AND ARMS**



Series	P/N	Hose supplied	Connection		Weight (kg) (net/gross)
			Inlet	Outlet	
<b>430 ABS</b> 20 bar	<b>4430/60</b>	without hose *	G 1/2" (f)	G 1/2" (m)	10,7/14,0
<b>430 ABS</b> 10 bar	<b>4430/61</b>	10 m - 5/8" (998/10)	G 3/4" (f)	G 3/4" (m)	14,7/18,0
	<b>4430/62</b>	8 m - 3/4" (978/8)	G 3/4" (f)	G 3/4" (m)	14,6/17,9

Hose reel capacity without hose    inner hose ø max length    \*    1/2"    5/8"    3/4"    16 m    14 m    8 m



<b>530 ABS</b> 20 bar	<b>4530/150</b>	without hose *	G 1" (f)	G 1" (f)	16,0/20,0
<b>530 ABS</b> 10 bar	<b>4530/63</b>	12 m - 3/4" (978/12)	G 1" (f)	G 3/4" (m)	22,2/26,2
	<b>4530/64</b>	8 m - 1" (988/8)	G 1" (f)	G 1" (m)	21,5/25,5

Hose reel capacity without hose    inner hose ø max length    \*    5/8"    3/4"    1"    22 m    12 m    8 m



<b>540 ABS</b> 20 bar	<b>4540/10</b>	without hose *	G 1" (f)	G 1" (f)	18,4/23,4
<b>540 ABS</b> 10 bar	<b>4540/61</b>	15 m - 3/4" (978/15)	G 1" (f)	G 3/4" (m)	24,8/29,8
	<b>4540/62</b>	20 m - 3/4" (978/20)	G 1" (f)	G 3/4" (m)	27,5/32,5
	<b>4540/63</b>	15 m - 1" (988/15)	G 1" (f)	G 1" (m)	29,7/34,7
	<b>4540/64</b>	10 m - 1" (988/10)	G 1" (f)	G 1" (m)	26,1/31,1

Hose reel capacity without hose    inner hose ø max length    \*    3/4"    1"    22 m    15 m

**AISI 304 S. STEEL BRACKETS AND ARMS**

AISI 304 s. steel central pin



Series	P/N	Hose supplied	Connection		Weight (kg) (net/gross)
			Inlet	Outlet	
<b>430 ABS</b> 20 bar	<b>4432/60</b>	without hose *	G 1/2" (f)	G 1/2" (m)	10,7/14,0
<b>430 ABS</b> 10 bar	<b>4432/61</b>	10 m - 5/8" (998/10)	G 3/4" (f)	G 3/4" (m)	14,7/18,0
	<b>4432/62</b>	8 m - 3/4" (978/8)	G 3/4" (f)	G 3/4" (m)	14,6/17,9

Hose reel capacity without hose    inner hose ø max length    \*    1/2"    5/8"    3/4"    16 m    14 m    8 m



<b>530 ABS</b> 20 bar	<b>4532/150</b>	without hose *	G 1" (f)	G 1" (f)	16,0/20,0
--------------------------	-----------------	----------------	----------	----------	-----------

Hose reel capacity without hose    inner hose ø max length    \*    5/8"    3/4"    1"    22 m    12 m    8 m



<b>540 ABS</b> 20 bar	<b>4542/10</b>	without hose *	G 1" (f)	G 1" (f)	18,4/23,4
<b>540 ABS</b> 10 bar	<b>4542/61</b>	15 m - 3/4" (978/15)	G 1" (f)	G 3/4" (m)	24,8/29,8
	<b>4542/62</b>	20 m - 3/4" (978/20)	G 1" (f)	G 3/4" (m)	27,5/32,5
	<b>4542/63</b>	15 m - 1" (988/15)	G 1" (f)	G 1" (m)	29,7/34,7
	<b>4542/64</b>	10 m - 1" (988/10)	G 1" (f)	G 1" (m)	26,1/31,1

Hose reel capacity without hose    inner hose ø max length    \*    3/4"    1"    22 m    15 m

Black rubber hose

In accordance with directive



**FIXED\***

\* Swivelling by adding the special bracket (see page 25)

Drum colours			
ABS		<b>RAL 1004</b>	<b>standard</b>
		RAL 7015	
		RAL 3020	
		RAL 5002	
		RAL 9005	

Hoses	Connections	Seals	Swivel joint	Central pin
black rubber	galvanized steel	Viton®	brass	galvanized steel
				AISI 304 s. steel
0,6 m inlet hose included				

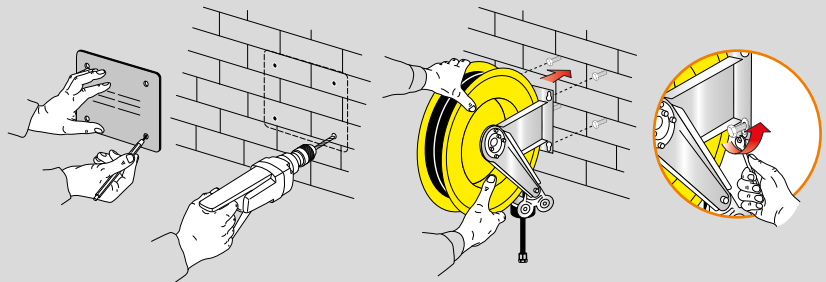
Dimensions (mm)	Series	A	B	C	D	E	F	G	H	I	Packaging (mm) W x D x H
	<b>430 ABS</b>	186	140	197	226	110	450	425	461	259	580 x 280 x 590
	<b>530 ABS</b>	203	153	221	258	121	535	510	558	327	650 x 290 x 700
	<b>540 ABS</b>	300	218	227	268	183	535	510	573	327	660 x 390 x 690

(W: width - D: depth - H: height)

## Wall mounting

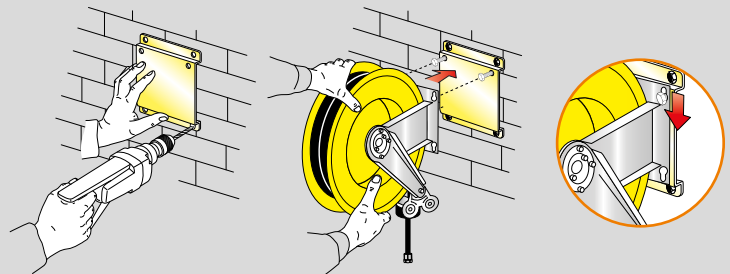
### TEMPLATE

The solid and compact fixed bracket, included with the hose reel, is provided with 4 slotted mounting holes for easy and safe installation. Using the template supplied with the hose reel it's easier to mark plugs holes for hose reel fixing.



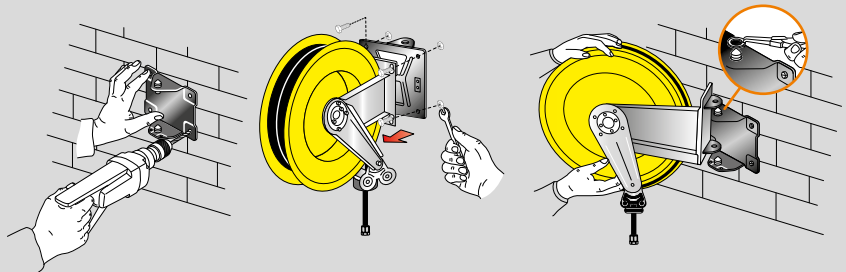
### FIXED BRACKET

On request an additional bracket for a quick installation and disassembly is available. Furthermore this bracket allows installing several hose reels in series. The P/N takes the suffix "/SM". For example: 300/10 becomes 300/10/SM.



### SWIVELLING BRACKET

On request a swivelling bracket to make the reel turning 40° to the right and 40° to the left is available. The P/N takes the suffix "/SO". For example: 300/10 becomes 300/10/SO.





In accordance with directive



**FIXED\***

\* Swivelling by adding the special bracket (see page 25)

Drum colours			
ABS		<b>RAL 1004</b>	<b>standard</b>
		RAL 7015	
		RAL 3020	
		RAL 5002	
		RAL 9005	

Hoses	Connections	Seals	Swivel joint	Central pin
antistatic EPDM rubber	AISI 304 s. steel	Viton®	AISI 304 s. steel AISI 316 s. steel	AISI 304 s. steel
 0,6 m inlet hose included				

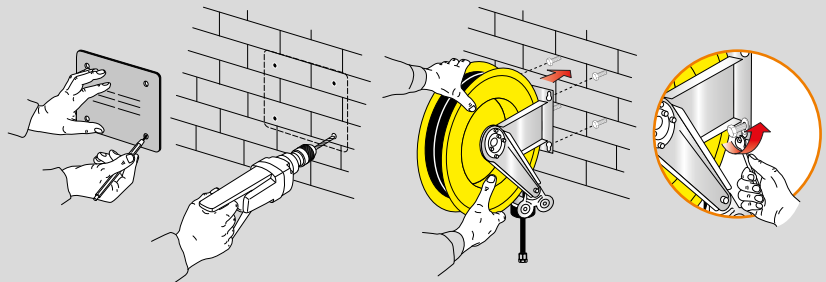
Dimensions (mm)	Series	A	B	C	D	E	F	G	H	I	Packaging (mm) W x D x H
	<b>430 ABS</b>	186	140	197	226	110	450	425	461	259	580 x 280 x 590
	<b>530 ABS</b>	203	153	221	258	121	535	510	558	327	650 x 290 x 700
	<b>540 ABS</b>	300	218	227	268	183	535	510	573	327	660 x 390 x 690

(W: width - D: depth - H: height)

## Wall mounting

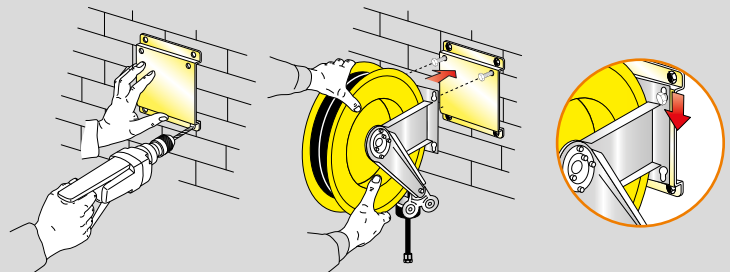
### TEMPLATE

The solid and compact fixed bracket, included with the hose reel, is provided with 4 slotted mounting holes for easy and safe installation. Using the template supplied with the hose reel it's easier to mark plugs holes for hose reel fixing.



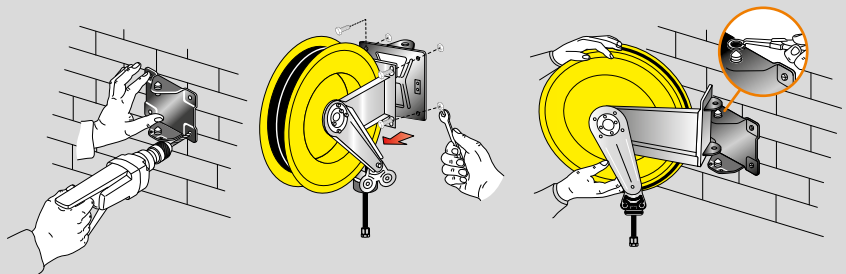
### FIXED BRACKET

On request an additional bracket for a quick installation and disassembly is available. Furthermore this bracket allows installing several hose reels in series. The P/N takes the suffix "/SM". For example: 300/10 becomes 300/10/SM.

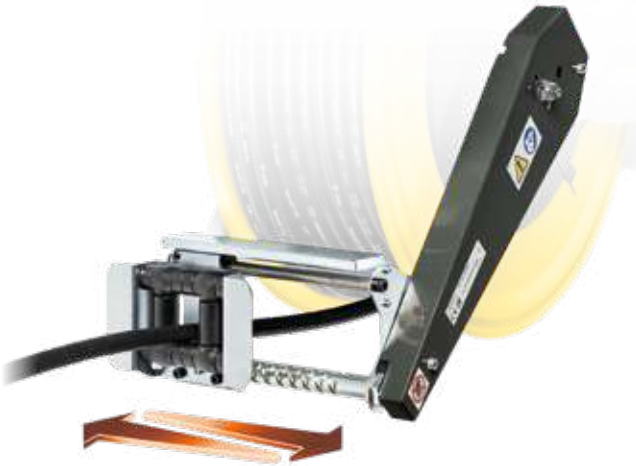


### SWIVELLING BRACKET

On request a swivelling bracket to make the reel turning 40° to the right and 40° to the left is available. The P/N takes the suffix "/SO". For example: 300/10 becomes 300/10/SO.



## AUTOMATIC HOSE GUIDE IN PAINTED STEEL



**P/N OE77/44312**

**Automatic hose guide in painted steel**  
for hose reel 430 Series (hoses up to 1/2").

**P/N OE77/45301**

**Automatic hose guide in painted steel**  
for hose reel 530 Series (hoses up to 1").

**P/N OE77/45312**

**Automatic hose guide in painted steel**  
for hose reel 530 Series (hoses up to 1/2").

**P/N OE77/45401**

**Automatic hose guide in painted steel**  
for hose reel 540 Series (hoses up to 3/4").

**P/N OE77/45412**

**Automatic hose guide in painted steel**  
for hose reel 540 Series (hoses up to 1/2").

Dimensions (mm)	Series	A	B	C	D	E	F	Packaging (mm) WxDxH
	<b>430 ABS</b>	319	284	135	389	209	172	380x120x150
	<b>530 ABS</b>	375	341	137	458	223	187	370x135x370
	<b>540 ABS</b>	375	341	137	458	288	252	370x135x370

(W: width - D: depth - H: height)

## AUTOMATIC HOSE GUIDE IN AISI 316 STAINLESS STEEL



**P/N OE79/44312**

**Automatic hose guide in AISI 316 stainless steel**  
for hose reel 430 Series (hoses up to 1/2").

**P/N OE79/45301**

**Automatic hose guide in AISI 316 stainless steel**  
for hose reel 530 Series (hoses up to 1").

**P/N OE79/45312**

**Automatic hose guide in AISI 316 stainless steel**  
for hose reel 530 Series (hoses up to 1/2").

**P/N OE79/45401**

**Automatic hose guide in AISI 316 stainless steel**  
for hose reel 540 Series (hoses up to 3/4").

**P/N OE79/45412**

**Automatic hose guide in AISI 316 stainless steel**  
for hose reel 540 Series (hoses up to 1/2").

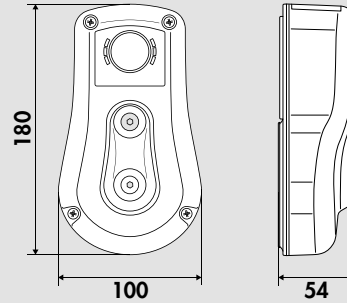
Dimensions (mm)	Series	A	B	C	D	E	F	Packaging (mm) WxDxH
	<b>430 ABS</b>	319	284	135	389	209	172	380x120x150
	<b>530 ABS</b>	375	341	137	458	223	187	370x135x370
	<b>540 ABS</b>	375	341	137	458	288	252	370x135x370

(W: width - D: depth - H: height)



**P/N 430/021**  
**Rewinding brake.**

it guarantees a controlled and safety rewinding speed in case of accidental hose's release.



**Packaging (mm) W x D x H**

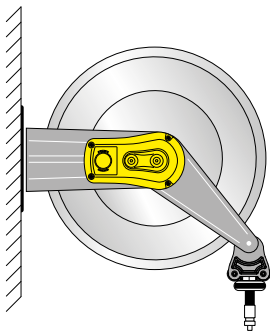


190 x 150 x 145

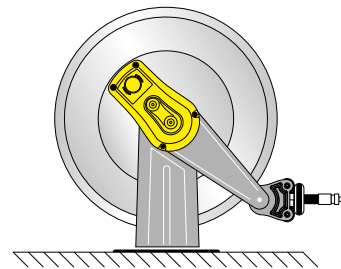
(W: width - D: depth - H: height)

## IN 430 ABS SERIES THE BRAKE CAN BE INSTALLED IN THE FOLLOWING TWO POSITIONS

Along the fixing bracket

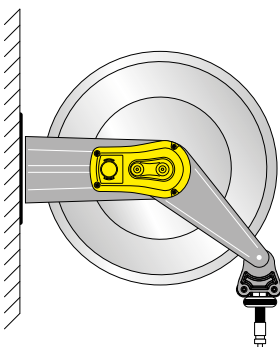


180° rotated compared to the arm

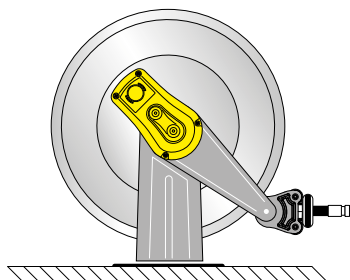


## IN 530 AND 540 ABS SERIES THE BRAKE CAN BE INSTALLED IN THE FOLLOWING THREE POSITIONS

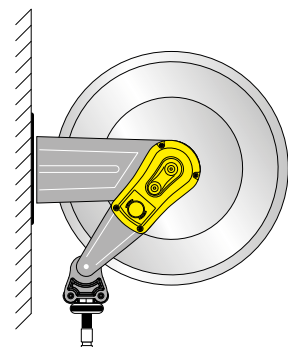
Along the fixing bracket



180° rotated compared to the arm



Along the arm



A **quick coupling support** is available upon request to facilitate the individual hose reel coupling and to optimize the installation in series, i.e. several hose reels set side-by-side.

**PAINTED  
STEEL**

**STAINLESS  
STEEL**



P/N 430/01



P/N 430/02

**Dimensions (mm)**

**P/N 430/01**

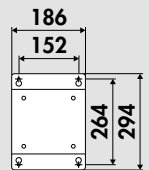
**Fixed support in steel**

for fixed painted steel hose reels 430 Series.

**P/N 430/02**

**Fixed support in AISI 304 stainless steel**

for fixed hose reels in AISI 304 stainless steel 430 Series.



P/N 530/01



P/N 530/02

**P/N 530/01**

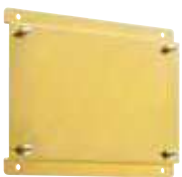
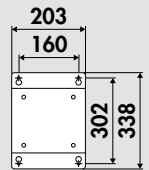
**Fixed support in steel**

for fixed painted steel hose reels 530 Series.

**P/N 530/02**

**Fixed support in AISI 304 stainless steel**

for fixed hose reels in AISI 304 stainless steel 530 Series.



P/N 540/01



P/N 540/02

**P/N 540/01**

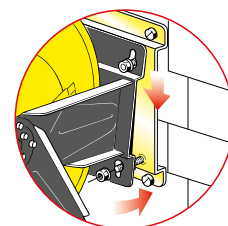
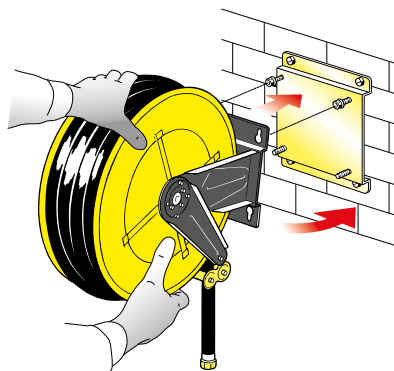
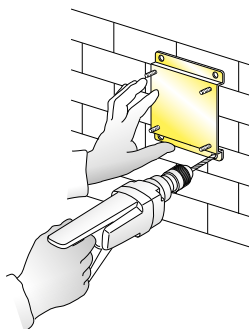
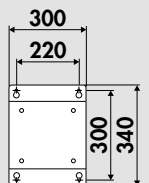
**Fixed support in steel**

for fixed painted steel hose reels 540 Series.

**P/N 540/02**

**Fixed support in AISI 304 stainless steel**

For fixed hose reels in AISI 304 stainless steel 540 Series.





# SWIVELLING WALL BRACKETS

A **swivelling bracket with quick coupling** is available upon request to facilitate hose reel installation in various positions - turned 40° to the right or left, or in the fixed 0° position - by locking it with two screws.

**PAINTED STEEL**

**STAINLESS STEEL**



P/N 430/05



P/N 430/06  
P/N 430/07



P/N 530/05



P/N 530/06  
P/N 530/07

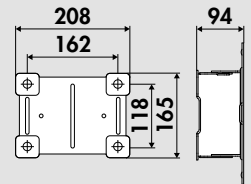


P/N 540/05



P/N 540/06  
P/N 540/07

**Dimensions (mm)**



**P/N 430/05**  
**Swivelling bracket in steel**  
for fixed hose reels in painted steel 430 Series.

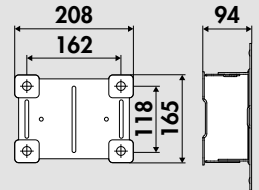
**P/N 430/06**  
**Swivelling bracket in AISI 304 stainless steel**  
for fixed hose reels in AISI 304 stainless steel 430 Series.

**P/N 430/07**  
**Swivelling bracket in AISI 316 stainless steel**  
for fixed hose reels in AISI 316 stainless steel 430 Series.

**P/N 530/05**  
**Swivelling bracket in steel**  
for fixed hose reels in painted steel 530 Series.

**P/N 530/06**  
**Swivelling bracket in AISI 304 stainless steel**  
for fixed hose reels in AISI 304 stainless steel 530 Series.

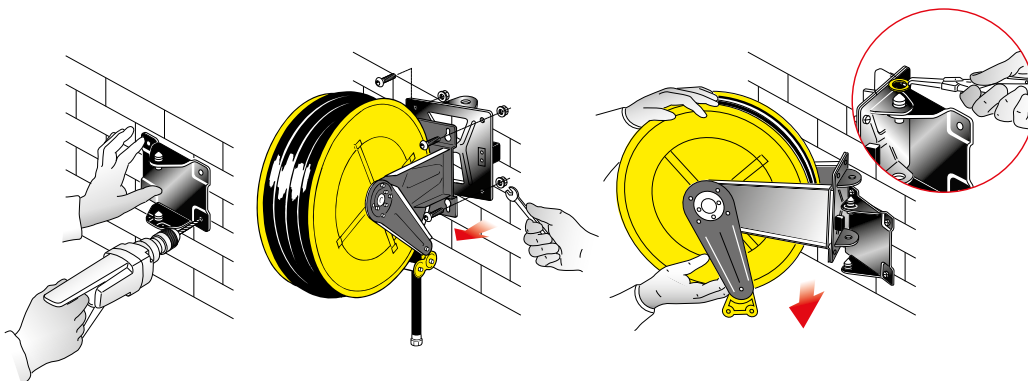
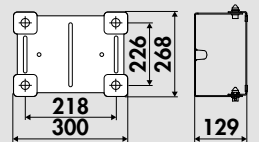
**P/N 530/07**  
**Swivelling bracket in AISI 316 stainless steel**  
for fixed hose reels in AISI 316 stainless steel 530 Series.

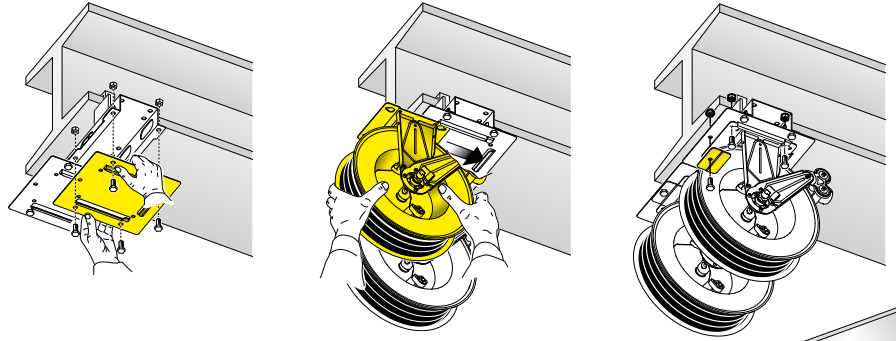


**P/N 540/05**  
**Swivelling bracket in painted steel**  
for fixed hose reels in painted steel 540 Series.

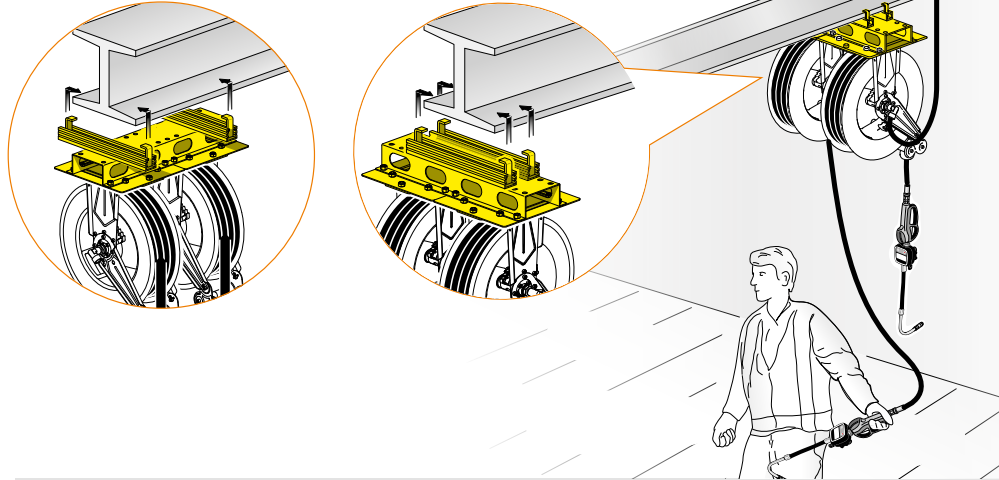
**P/N 540/06**  
**Swivelling bracket in AISI 304 stainless steel**  
for fixed hose reels in AISI 304 stainless steel 540 Series.

**P/N 540/07**  
**Swivelling bracket in AISI 316 stainless steel**  
For fixed hose reels in AISI 316 stainless steel 540 Series.



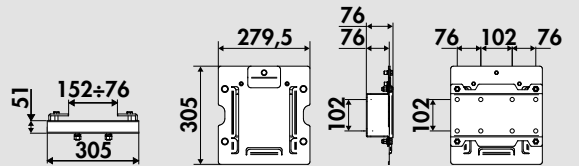


This special bracket is used to install 1, 2 or 3 hose reels (430 Series) on HEA **ceiling beams**. It can be installed and used in two different positions, turned 90° as shown in the figure to the side.

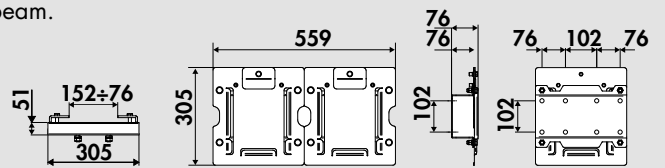


**P/N 430/011**  
Bracket for installing 1 hose reel  
430 Series on HEA beam.

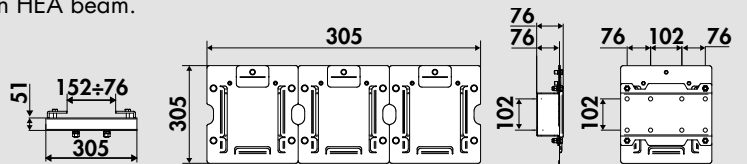
Dimensions (mm)



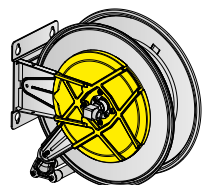
**P/N 430/012**  
Bracket for installing 2 hose reels  
430 Series on HEA beam.



**P/N 430/013**  
Bracket for installing 3 hose reels  
430 Series on HEA beam.



**P/N 430/08**  
Protective rack side cover in ABS  
for hose reel 430 Series.



**P/N 530/08**  
Protective rack side cover in ABS  
For hose reel 530-540 Series.





POLYURETHANE



BLACK RUBBER  
ANTISTATIC EPDM  
RUBBER



HYGIENIC RUBBER  
FDA HYGIENIC  
RUBBER

## Air-Water 10 bar

P/N	Hose length	Hose characteristics	Max working temperature	Hose ø	Dimensions internal ø x external ø	Inlet	Outlet	Connections
960/15	15 m	FDA hygienic	95 °C	1/2"	13 x 20 mm	G 1/2" (m)	G 1/2" (f)	galvanized steel
960/25	25 m	FDA hygienic	95 °C	1/2"	13 x 20 mm	G 1/2" (m)	G 1/2" (f)	galvanized steel

## Air-Water 20 bar

P/N	Hose length	Hose characteristics	Max working temperature	Hose ø	Dimensions internal ø x external ø	Inlet	Outlet	Connections
952/13	12 m	black rubber	80 °C	3/8"	9,5 x 16 mm	G 3/8" (f)	G 3/8" (m)	galvanized steel
952/19	18 m	black rubber	80 °C	3/8"	9,5 x 16 mm	G 3/8" (f)	G 3/8" (m)	galvanized steel
961/11	10 m	polyurethane	60 °C	1/2"	13 x 19 mm	G 1/2" (f)	G 1/2" (m)	brass
961/15	15 m	polyurethane	60 °C	1/2"	13 x 19 mm	G 1/2" (f)	G 1/2" (m)	brass
961/20	20 m	polyurethane	60 °C	1/2"	13 x 19 mm	G 1/2" (m)	G 1/2" (m)	brass
961/25	25 m	polyurethane	60 °C	1/2"	13 x 19 mm	G 1/2" (f)	G 1/2" (m)	brass
962/10	10 m	black rubber	80 °C	1/2"	12,7 x 20 mm	G 1/2" (f)	G 1/2" (m)	galvanized steel
962/15	15 m	black rubber	80 °C	1/2"	12,7 x 20 mm	G 1/2" (f)	G 1/2" (m)	galvanized steel
962/20	20 m	black rubber	80 °C	1/2"	12,7 x 20 mm	G 1/2" (f)	G 1/2" (m)	galvanized steel
962/25	25 m	black rubber	80 °C	1/2"	12,7 x 20 mm	G 1/2" (f)	G 1/2" (m)	galvanized steel
962/30	30 m	black rubber	80 °C	1/2"	12,7 x 20 mm	G 1/2" (f)	G 1/2" (m)	galvanized steel
972/15	15 m	black rubber	80 °C	3/4"	19 x 26,5 mm	G 3/4" (f)	G 3/4" (m)	galvanized steel
972/20	20 m	black rubber	80 °C	3/4"	19 x 26,5 mm	G 3/4" (f)	G 3/4" (m)	galvanized steel
982/15	15 m	black rubber	80 °C	1"	25,4 x 32,5 mm	G 1" (f)	G 1" (m)	galvanized steel

## Hot water 50 bar

P/N	Hose length	Hose characteristics	Max working temperature	Hose ø	Dimensions internal ø x external ø	Inlet	Outlet	Connections
983/15	15 m	black rubber	80 °C	1"	25,4 x 31,5 mm	G 1" (f)	G 1" (m)	galvanized steel
984/14	15 m	hygienic	80 °C	1"	25,4 x 31,5 mm	G 1" (f)	G 1" (m)	galvanized steel

## Hot water 100 bar

P/N	Hose length	Hose characteristics	Max working temperature	Hose ø	Dimensions internal ø x external ø	Inlet	Outlet	Connections
963/12	10 m	black rubber	80 °C	1/2"	12,7 x 18,5 mm	G 1/2" (f)	G 1/2" (m)	galvanized steel
963/14	15 m	black rubber	80 °C	1/2"	12,7 x 18,5 mm	G 1/2" (f)	G 1/2" (m)	galvanized steel
963/19	20 m	black rubber	80 °C	1/2"	12,7 x 18,5 mm	G 1/2" (f)	G 1/2" (m)	galvanized steel
963/24	25 m	black rubber	130 °C	1/2"	12,7 x 18,5 mm	G 1/2" (f)	G 1/2" (m)	galvanized steel
964/15	15 m	hygienic	130 °C	1/2"	12,7 x 18,5 mm	G 1/2" (f)	G 1/2" (m)	galvanized steel
964/25	25 m	hygienic	130 °C	1/2"	12,7 x 18,5 mm	G 1/2" (f)	G 1/2" (m)	galvanized steel
973/14	15 m	black rubber	80 °C	3/4"	19 x 25 mm	G 3/4" (f)	G 3/4" (m)	galvanized steel
973/19	20 m	black rubber	80 °C	3/4"	19 x 25 mm	G 3/4" (f)	G 3/4" (m)	galvanized steel
974/15	15 m	hygienic	80 °C	3/4"	19 x 25 mm	G 3/4" (f)	G 3/4" (m)	galvanized steel
974/20	20 m	hygienic	130 °C	3/4"	19 x 25 mm	G 3/4" (f)	G 3/4" (m)	galvanized steel

## Hot water 200 bar

P/N	Hose length	Hose characteristics	Max working temperature	Hose ø	Dimensions internal ø x external ø	Inlet	Outlet	Connections
955/12	12 m	black rubber	130 °C	3/8"	9,5 x 17 mm	G 3/8" (f)	G 3/8" (f)	galvanized steel
955/18	18 m	black rubber	130 °C	3/8"	9,5 x 17 mm	G 3/8" (f)	G 3/8" (f)	galvanized steel
955/20	20 m	black rubber	130 °C	3/8"	9,5 x 17 mm	G 3/8" (f)	G 3/8" (f)	galvanized steel
955/25	25 m	black rubber	130 °C	3/8"	9,5 x 17 mm	G 3/8" (f)	G 3/8" (f)	galvanized steel
955/30	30 m	black rubber	130 °C	3/8"	9,5 x 17 mm	G 3/8" (f)	G 3/8" (f)	galvanized steel
956/18	18 m	hygienic	130 °C	3/8"	9,5 x 17 mm	G 3/8" (f)	G 3/8" (f)	galvanized steel
956/25	25 m	hygienic	130 °C	3/8"	9,5 x 17 mm	G 3/8" (f)	G 3/8" (f)	galvanized steel
956/30	30 m	hygienic	130 °C	3/8"	9,5 x 17 mm	G 3/8" (f)	G 3/8" (f)	galvanized steel

### Hot water 400 bar

P/N	Hose length	Hose characteristics	Max working temperature	Hose ø	Dimensions internal ø x external ø	Inlet	Outlet	Connections
906/25	25 m	hygienic	130 °C	3/8"	9,5 x 17,5 mm	G 3/8" (f)	G 3/8" (f)	galvanized steel
907/15	15 m	black rubber	130 °C	3/8"	9,5 x 17,5 mm	G 3/8" (f)	G 3/8" (f)	galvanized steel
907/25	25 m	black rubber	130 °C	3/8"	9,5 x 17,5 mm	G 3/8" (f)	G 3/8" (f)	galvanized steel

### Oil and similar 50 bar

P/N	Hose length	Hose characteristics	Max working temperature	Hose ø	Dimensions internal ø x external ø	Inlet	Outlet	Connections
983/310	10 m	black rubber	80 °C	1"	25,4 x 33,5 mm	G 1" (m)	G 1" (f)	galvanized steel
983/315	15 m	black rubber	80 °C	1"	25,4 x 33,5 mm	G 1" (f)	G 1" (m)	galvanized steel

### Oil and similar 100 bar

P/N	Hose length	Hose characteristics	Max working temperature	Hose ø	Dimensions internal ø x external ø	Inlet	Outlet	Connections
973/308	8 m	black rubber	80 °C	3/4"	19 x 26,5 mm	G 3/4" (m)	G 1/2" (f)	galvanized steel
973/312	12 m	black rubber	80 °C	3/4"	19 x 26,5 mm	G 3/4" (m)	G 3/4" (f)	galvanized steel
973/315	15 m	black rubber	80 °C	3/4"	19 x 26,5 mm	G 3/4" (f)	G 3/4" (m)	galvanized steel
973/320	20 m	black rubber	80 °C	3/4"	19 x 26,5 mm	G 3/4" (f)	G 3/4" (m)	galvanized steel
993/310	10 m	black rubber	80 °C	5/8"	16 x 23 mm	G 1/2" (f)	G 3/4" (m)	galvanized steel

### Oil and similar 150 bar

P/N	Hose length	Hose characteristics	Max working temperature	Hose ø	Dimensions internal ø x external ø	Inlet	Outlet	Connections
963/11	10 m	black rubber	80 °C	1/2"	12,7 x 19 mm	G 1/2" (f)	G 1/2" (m)	galvanized steel
963/15	15 m	black rubber	80 °C	1/2"	12,7 x 19 mm	G 1/2" (f)	G 1/2" (m)	galvanized steel
963/20	20 m	black rubber	80 °C	1/2"	12,7 x 19 mm	G 1/2" (f)	G 1/2" (m)	galvanized steel
963/25	25 m	black rubber	80 °C	1/2"	12,7 x 19 mm	G 1/2" (f)	G 1/2" (m)	galvanized steel
963/30	30 m	black rubber	80 °C	1/2"	12,7 x 19 mm	G 1/2" (f)	G 1/2" (m)	galvanized steel

### Grease 400 bar

P/N	Hose length	Hose characteristics	Max working temperature	Hose ø	Dimensions internal ø x external ø	Inlet	Outlet	Connections
935/13	12 m	black rubber	80 °C	1/4"	6,3 x 17,5 mm	G 1/4" (f)	G 1/4" (m)	galvanized steel
935/18	18 m	black rubber	80 °C	1/4"	6,3 x 17,5 mm	G 1/4" (f)	G 1/4" (m)	galvanized steel
957/10	10 m	black rubber	80 °C	3/8"	9,5 x 18 mm	G 3/8" (f)	G 1/4" (m)	galvanized steel
957/15	15 m	black rubber	80 °C	3/8"	9,5 x 18 mm	G 3/8" (f)	G 1/4" (m)	galvanized steel
957/20	20 m	black rubber	80 °C	3/8"	9,5 x 18 mm	G 3/8" (f)	G 1/4" (m)	galvanized steel
957/25	25 m	black rubber	80 °C	3/8"	9,5 x 18 mm	G 3/8" (f)	G 1/4" (m)	galvanized steel
957/30	30 m	black rubber	80 °C	3/8"	9,5 x 18 mm	G 3/8" (f)	G 1/4" (m)	galvanized steel

### Diesel 10 bar

P/N	Hose length	Hose characteristics	Max working temperature	Hose ø	Dimensions internal ø x external ø	Inlet	Outlet	Connections
978/8	8 m	black rubber	80 °C	3/4"	19 x 27 mm	G 1/2" (f)	G 3/4" (m)	galvanized steel
978/12	12 m	black rubber	80 °C	3/4"	19 x 27 mm	G 1/2" (f)	G 1/2" (m)	galvanized steel
978/15	15 m	black rubber	80 °C	3/4"	19 x 27 mm	G 3/4" (f)	G 3/4" (m)	galvanized steel
978/20	20 m	black rubber	80 °C	3/4"	19 x 27 mm	G 3/4" (f)	G 3/4" (m)	galvanized steel
988/8	8 m	black rubber	80 °C	1"	25 x 35 mm	G 1" (f)	G 1" (m)	galvanized steel
988/10	10 m	black rubber	80 °C	1"	25 x 35 mm	G 1" (f)	G 1" (m)	galvanized steel
988/15	15 m	black rubber	80 °C	1"	25 x 35 mm	G 1" (f)	G 1" (m)	galvanized steel
998/10	10 m	black rubber	80 °C	5/8"	16 x 23 mm	G 1/2" (f)	G 3/4" (m)	galvanized steel

### AdBlue® 10 bar

P/N	Hose length	Hose characteristics	Max working temperature	Hose ø	Dimensions internal ø x external ø	Inlet	Outlet	Connections
882/8	8 m	Antistatic EPDM	80 °C	3/4"	19 x 27 mm	G 1/2" (f)	G 3/4" (m)	AISI 316 s. steel
882/10	10 m	Antistatic EPDM	80 °C	3/4"	19 x 27 mm	G 3/4" (f)	G 3/4" (m)	AISI 316 s. steel
882/15	15 m	Antistatic EPDM	80 °C	3/4"	19 x 27 mm	G 3/4" (f)	G 3/4" (m)	AISI 316 s. steel

# GENERAL SALES CONDITIONS

The following general sales conditions regulate the sale of goods and services by the company ECODORA S.r.l. for customers residing outside the territory of the Italian State.

## P/N 1 GOODS DELIVERY TERMS

The goods are delivered ex works ECODORA S.r.l. The subsequent transport/shipment must occur by, in the name and at the expense of the purchasing customer, even by means of a carrier appointed and designated by the same. All risks arising from loading, subsequent custody and transport are borne entirely by the purchasing customer.

## P/N 2 MINIMUM ORDERS

Each order cannot be for less than € 1,500.00, net of fees, taxes, customs duties, discounts and rebates and any other charges not included in the price of the goods. If, at the option of ECODORA S.r.l., orders for lower amounts are accepted, an extra charge of € 155,00 shall be applied for order management administrative expenses.

## P/N 3 ACCESSORIES

All the accessories given in the price list (plugs, oil bar taps, oil guns, grease guns, probes, protection caps, clutches, swivelling supports, etc.) are supplied exclusively for fitting to or combining with the items ECODORA S.r.l. produces.

## P/N 4 COMPLAINTS

Any defects immediately noticed after a brief inspection of the goods (damage, shortages or different product from that ordered) must be notified in writing to our company within 8 (eight) days of receipt of the goods. Any defects in the product noticeable only during its use must be notified in writing to ECODORA S.r.l. within 8 (eight) days of being detected. Any returns of goods must be authorized in advance by ECODORA S.r.l. and freight charges are at the customer's expenses.

## P/N 5 DELIVERY TIMES/TERMS

Delivery times and dates are only approximate and are subject to change. Any delays in delivery do not entitle the customer to cancel the order or claim compensation for damages caused by delay of delivery. Delivery times for urgent orders must be agreed directly with ECODORA S.r.l. ECODORA S.r.l. has the right not to carry out the order and/or totally or partially carry it out, without this giving rise to reimbursement or claims for compensation for damage.

## P/N 6 PACKS AND PACKAGING

Packaging costs are included in the price, except for special packing, which shall be charged at cost.

## P/N 7 PRICES

The current Price list cancels and replaces the previous price list. In the event of changes to our price list and/or individual items, the goods shall be forwarded at the price in force on the day of the order confirmation. The price list and/or the prices of individual items can be changed even without notice, according to the changes in market conditions or technical innovations/modifications made to the product. The prices are understood to be ex works ECODORA S.r.l.

## P/N 8 PAYMENTS

Payments must be made exclusively to ECODORA S.r.l. at the agreed conditions. Under no circumstances will deductions or roundings be accepted. In case of late payment with respect to the agreed conditions, ECODORA S.r.l. reserves the right to charge interest at the current rate, effective from the day after that agreed for payment, plus any additional expenses. Discounts conditional on the payment term and already credited shall be recharged.

## P/N 9 WARRANTY

ECODORA S.r.l. provides each product with the communication of particular instructions for the installation, use and maintenance requirements and the need to carry out possible checks on the product. All the technical information and data mentioned in the catalogue and in the price-list in force are not binding and can be changed without prior notice for the purpose of improving the quality of the products. All products manufactured by ECODORA S.r.l. are guaranteed for a period of 5 (five) years from the date of delivery to the first user. The user must keep and show the sales invoice - or an equivalent document - together with the item's serial number in order to make a claim under the ECODORA S.r.l. guarantee. The 5 (five) year guarantee does not apply to components which are subject to normal wear and tear (such as gaskets, diaphragms, O-rings, hoses, etc.), electronic components and items that are sold but not manufactured by ECODORA S.r.l. (marked with a red asterisk in the current product catalogue) which are guaranteed for 1 (one) year from the date of delivery to the first user.

1 (one) year warranty is valid also for the following products:

- digital litre counters and FCS system;
- cable reels;
- electric, pneumatic or hydraulic motor supplied with our industrial hose reels s. 600 and 700.

Incorrect installation, use or maintenance of the product shall void the warranty. Upon written notice, the articles must be returned free to our Factory for checking and acceptance. In any case, the guarantee expires in the 10th year from the date of manufacture (indicated by the serial number), if the stated expiry takes place before the expiration terms indicated above (1 or 5 years from delivery to the first user).

## P/N 10 RESPONSIBILITY

ECODORA S.r.l. is exempt from any responsibility and liability for accidents that may occur to persons and property, as a result of or during the use of the equipment, due to or depending on the same whenever the products have been damaged during transport, tampered with or modified, or improperly used, or stored, installed, protected and preserved without complying with the instructions of ECODORA S.r.l. as given in the installation, use and maintenance instruction manuals for each product. ECODORA S.r.l. is liable for the value for the supplied product and cannot be held responsible in any way for other possible costs or additional costs that the customer may bear.

The Intellectual Property rights to the trademark ECODORA are exclusive and all rights to its use and reproduction are reserved.

The ECODORA trademark is a protected trademark at an international level. No part of the ECODORA trademark and its logo may be utilized, copied and/or used in any form, time and space, even by means of improper alterations.

The Intellectual Property rights on the images published in this catalogue are owned exclusively by ECODORA S.r.l. and any unauthorized reproduction is prohibited.

Any use in general of the assets protected by the Intellectual Property rights of the trademark ECODORA is prohibited and is subject to the prior written permission of ECODORA S.r.l.

# FOR FOREIGN MARKETS

## **P/N 11 CONFIDENTIALITY**

Information not in the public domain that is exchanged in the execution of the contract is subject to the obligation of confidentiality, secrecy and security; said information is covered as an industrial secret and is of a confidential and reserved nature and may not be disseminated to third parties; its use is permitted exclusively and strictly to execute the supply contract.

## **P/N 12 INTELLECTUAL PROPERTY RIGHTS**

The ECODORA trademark, and likewise the name ECODORA, ECODORA S.r.l., the logo and the other distinctive signs are internationally registered trademarks, and ECODORA S.r.l. does not authorise their use and application under any circumstances. Without prior written consent from ECODORA S.r.l., the content of catalogues, price lists, instruction manuals and similar, including content on the website may not be reproduced, either entirely or partially, nor may it be transferred by electronic or traditional means, nor may it be modified or utilised by any means and for any purpose. All rights are held by ECODORA S.r.l. The customer acknowledges that ECODORA S.r.l. holds exclusive ownership of all the parts, images, photographs and signs not in common usage, the content in the catalogues, price lists, instruction manuals and similar and/or present on the website [www.ecodora.com](http://www.ecodora.com) and/or other channels and/or social networks used by ECODORA S.r.l. for their informational and marketing campaigns pursuant to Copyright Law and the Industrial Property Code.

## **P/N 13 INFORMATION ON THE PROCESSING OF DATA PURSUANT TO ITALIAN LEGISLATIVE DECREE 196/2003**

In accordance with article 13 of Italian Legislative Decree 196/2003 - Personal Data Protection Code - you are hereby advised that the processing of the personal data, provided with the purchase of goods or services and/or the supply of goods or services is solely for the purposes of carrying out the contract-based obligations and to comply with the specific requests from customers/ suppliers, as well as adhering to legislative obligations, in particular accounting and tax obligations or to respect orders issued by public authorities or to exercise a right in court.

The data shall also be used for commercial statistics for corporate use and to obtain commercial information on our products and services if expressly authorised by the applicant. The processing of data shall be done using hard-copy and computerised procedures, in the manner and within the limits necessary to achieve the aforementioned purposes. Data may be communicated and processed by other companies in the Group for the same specified purposes, and may be made known to employees of our company, consultants and other suppliers, always and exclusively within the limits of the aforementioned purposes.

The provision of data is mandatory for the correct execution of the contract and pre-contract based obligations, and failure to do so could result in it being impossible to fully comply with contractual obligations, and make it impossible to provide updates on the new products and services offered by our company. Data shall be processed for the duration of the contract relationship in place and subsequently to fulfil any legal formalities.

## **P/N 14 RIGHTS OF DATA SUBJECTS**

The information is aimed at defining the limits and methods for the processing of data, based on which individual customers and/or suppliers may freely authorise the collection and subsequent use of data. Data subjects are entitled to the rights pursuant to article 7 of the aforementioned Code and in particular, the right to access their personal data, ask for the amendment, update and cancellation thereof, if incomplete, incorrect or collected in violation of the law, and may object to the processing for legitimate reasons, addressing requests in this regard to ECODORA S.r.l.

Pursuant to the same article the data subject also has the right to request the complete and updated list of the Data Supervisors, and to ask for the cancellation, transformation into anonymous form or blocking of data processed in violation of the law, and to oppose in any case, for legitimate reasons, the processing thereof. To exercise these rights, and in the case of problems or any requests for clarification regarding what has been explained herein, kindly address these to the following email address: [info@ecodora.com](mailto:info@ecodora.com).

## **P/N 15 DATA CONTROLLER**

The Data Controller is ECODORA S.r.l. with registered office at Via Marangoni 33, Cassola (VI) – Italy, and this is where the data processing shall take place.

## **P/N 16 COMPETENT LAW COURT**

Any disputes shall be settled by the Law Court of Vicenza, Italy.



The manufacturer declines any responsibility for possible inaccuracies contained in this catalogue, due to printing or transcription errors.

The manufacturer reserves the right to make any changes or improvements of a functional, technical or aesthetic nature without prior notice.



All rights reserved by Ecodora S.r.l.



Company with an ISO  
9001:2015 certified  
quality management system



Ecodora S.r.l.  
Vicenza - Italy  
tel. +39 0424 570891  
fax +39 0424 571354  
[www.ecodora.com](http://www.ecodora.com)  
[info@ecodora.com](mailto:info@ecodora.com)

CE Made in Italy

